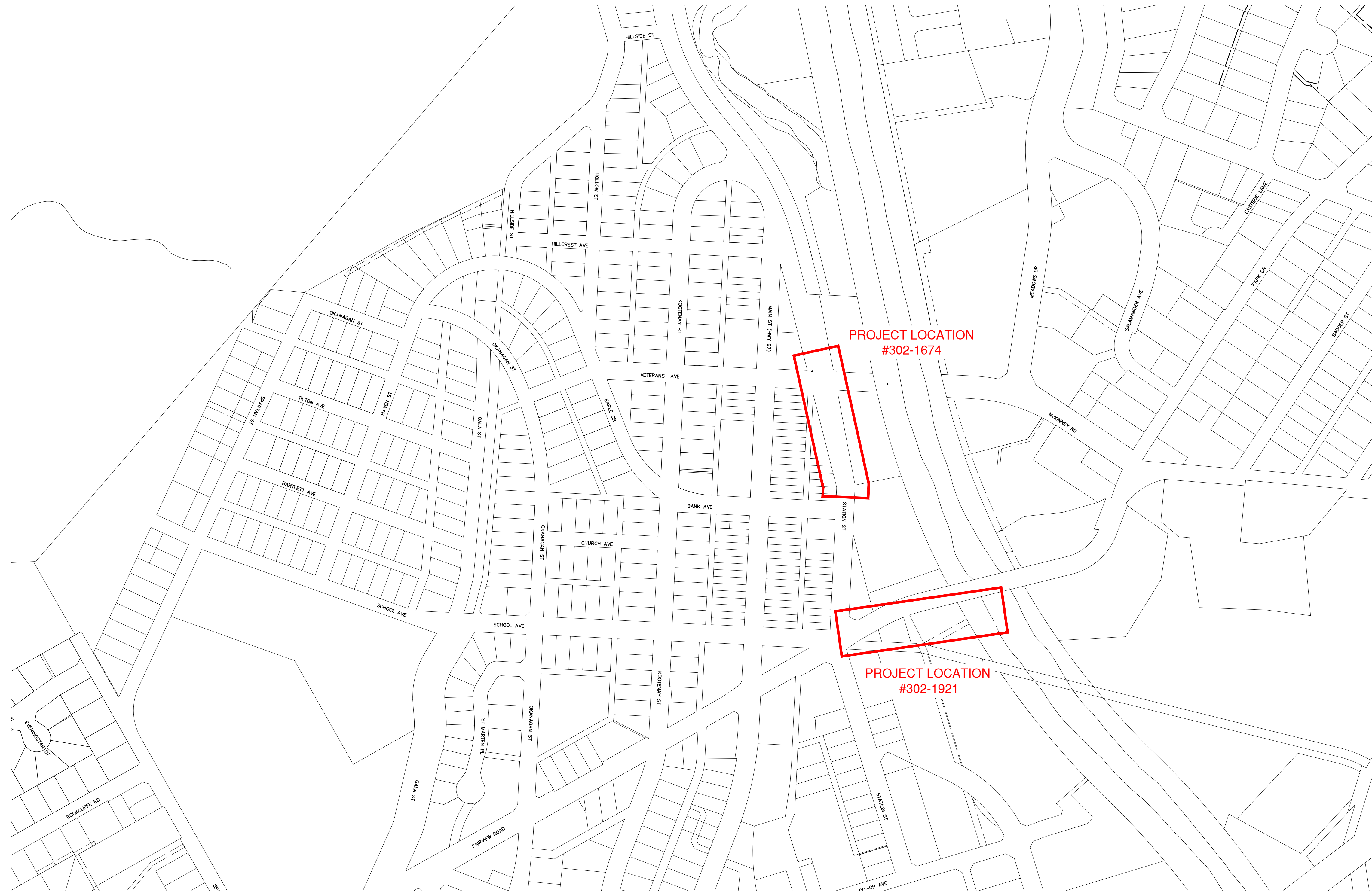


# TOWN OF OLIVER

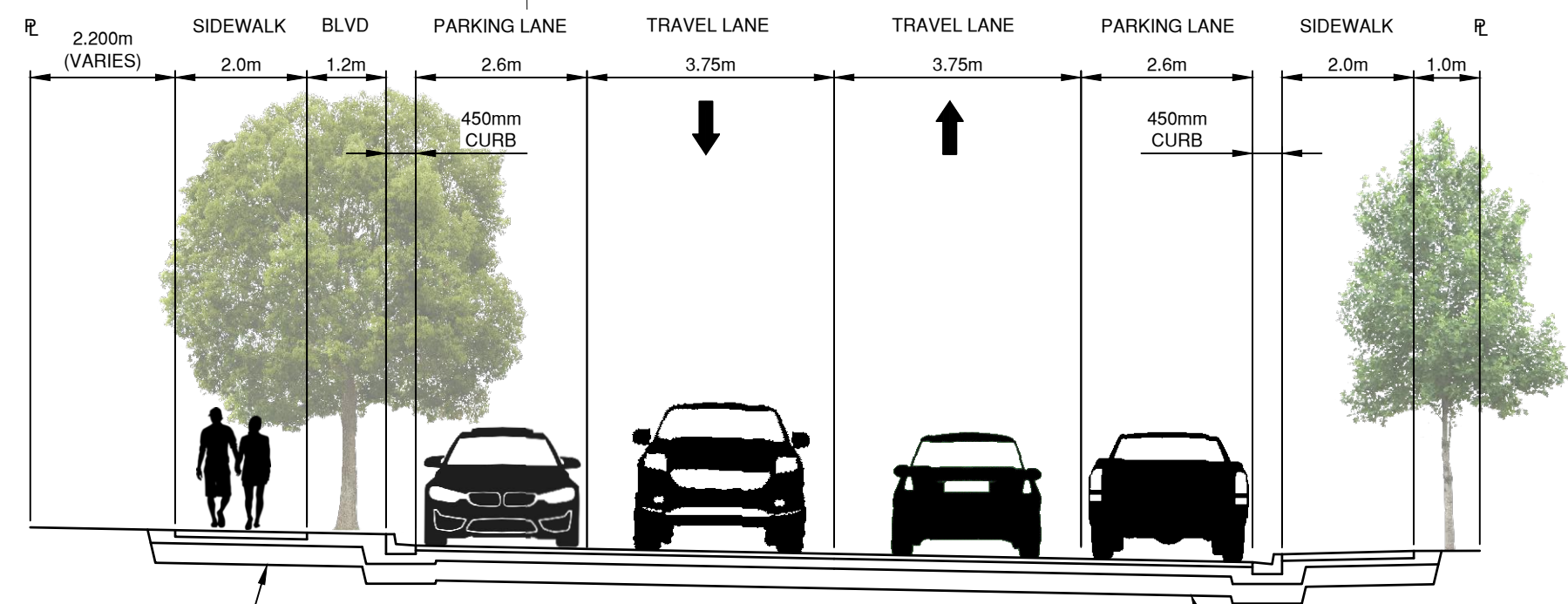
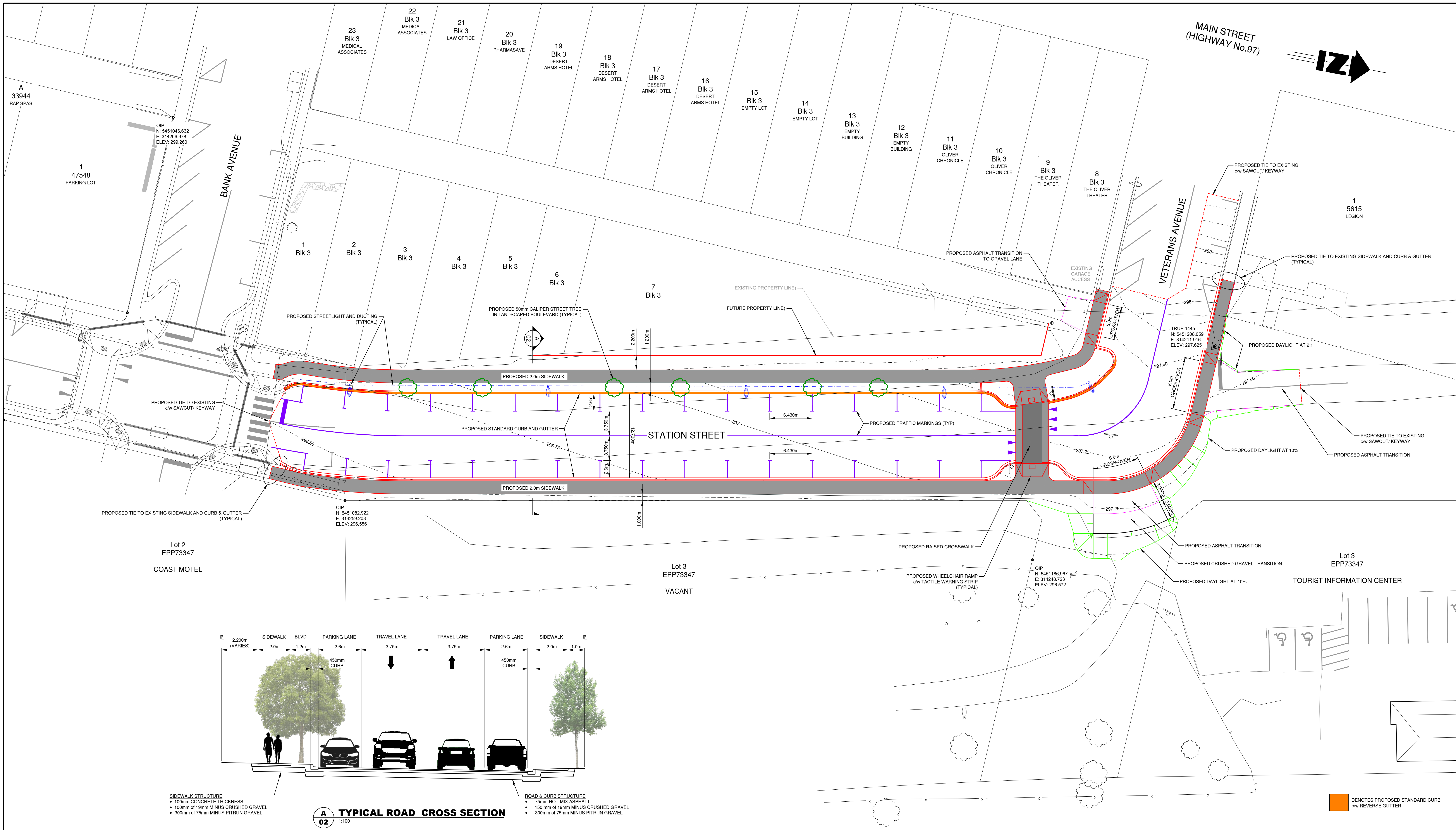
## STATION STREET RECONSTRUCTION

### BANK AVENUE TO VETERANS AVENUE



LIST OF DRAWINGS	
306-1674-01	LOCATION PLAN AND LIST OF DRAWINGS
306-1674-02	OVERALL PLAN
306-1674-03	SURFACE REMOVALS
306-1674-04	STATION STREET UTILITIES PLAN and PROFILE
306-1674-05	MANHOLE DETAILS
306-1674-06	TRAFFIC MARKINGS, SIGNAGE, CROSS SECTIONS AND CROSSWALK DETAILS
306-1674-07	LANDSCAPE PLAN AND DETAILS
306-1674-08	GEOMETRICS
306-1674-09	TRUCK TURNING MOVEMENTS
306-1674-10	STANDARD DETAILS
306-1674-11	STANDARD DETAILS
16609-E01	EXCEED - STREET LIGHTING SITE PLAN
16609-E02	EXCEED - STREET LIGHTING DETAILS
306-1921-01	FAIRVIEW ROAD STORM OUTFALL REPLACEMENT PLAN and PROFILE

<table border="1"> <thead> <tr> <th>No.</th> <th>DATE</th> <th>DESCRIPTION</th> <th>BY</th> <th>APP'D</th> </tr> </thead> <tbody> <tr> <td>2</td> <td>AUG 31/21</td> <td>ISSUED FOR CONSTRUCTION</td> <td>TT</td> <td>SU</td> </tr> <tr> <td>1</td> <td>JULY 08/21</td> <td>ISSUED FOR TENDER</td> <td>TT</td> <td>SU</td> </tr> </tbody> </table>	No.	DATE	DESCRIPTION	BY	APP'D	2	AUG 31/21	ISSUED FOR CONSTRUCTION	TT	SU	1	JULY 08/21	ISSUED FOR TENDER	TT	SU	<p>201 - 2079 Falcon Road ■ Kamloops BC ■ V2C 4J2 tel 250.828.0881 ■ fax 250.828.0717 info@TRUE.bc.ca</p>	<p><b>STATION STREET RECONSTRUCTION</b> <b>BANK AVE to VETERANS AVE</b></p>	<p><b>LOCATION PLAN AND LIST OF DRAWINGS</b></p>	SCALE 1:2500 DESIGN BY TT DRAWN BY DM DATE August 2021 PROJECT REFERENCE No. 306-1674 DRAWING No. 306-1674-01 SHEET 2
	No.	DATE	DESCRIPTION	BY	APP'D														
2	AUG 31/21	ISSUED FOR CONSTRUCTION	TT	SU															
1	JULY 08/21	ISSUED FOR TENDER	TT	SU															
ISSUES / REVISIONS CONSULTANT SEAL																			



- SIDEWALK STRUCTURE**
- 100mm CONCRETE THICKNESS
  - 100mm of 19mm MINUS CRUSHED GRAVEL
  - 300mm of 75mm MINUS PITRUN GRAVEL
- ROAD & CURB STRUCTURE**
- 75mm HOT MIX ASPHALT
  - 150 mm of 19mm MINUS CRUSHED GRAVEL
  - 300mm of 75mm MINUS PITRUN GRAVEL

**A 02** TYPICAL ROAD CROSS SECTION  
1:100

■ DENOTES PROPOSED STANDARD CURB  
c/w REVERSE GUTTER

No.	DATE	DESCRIPTION	BY	APP'D
2	AUG 31/21	ISSUED FOR CONSTRUCTION ADDED SURVEY CONTROL	TT	SU
1	JULY 08/21	ISSUED FOR TENDER	TT	SU

ISSUES / REVISIONS	

**TRUE CONSULTING**

201 - 2079 Falcon Road ■ Kamloops BC ■ V2C 4J2  
tel 250.828.0881 ■ fax 250.828.0717  
info@TRUE.bc.ca

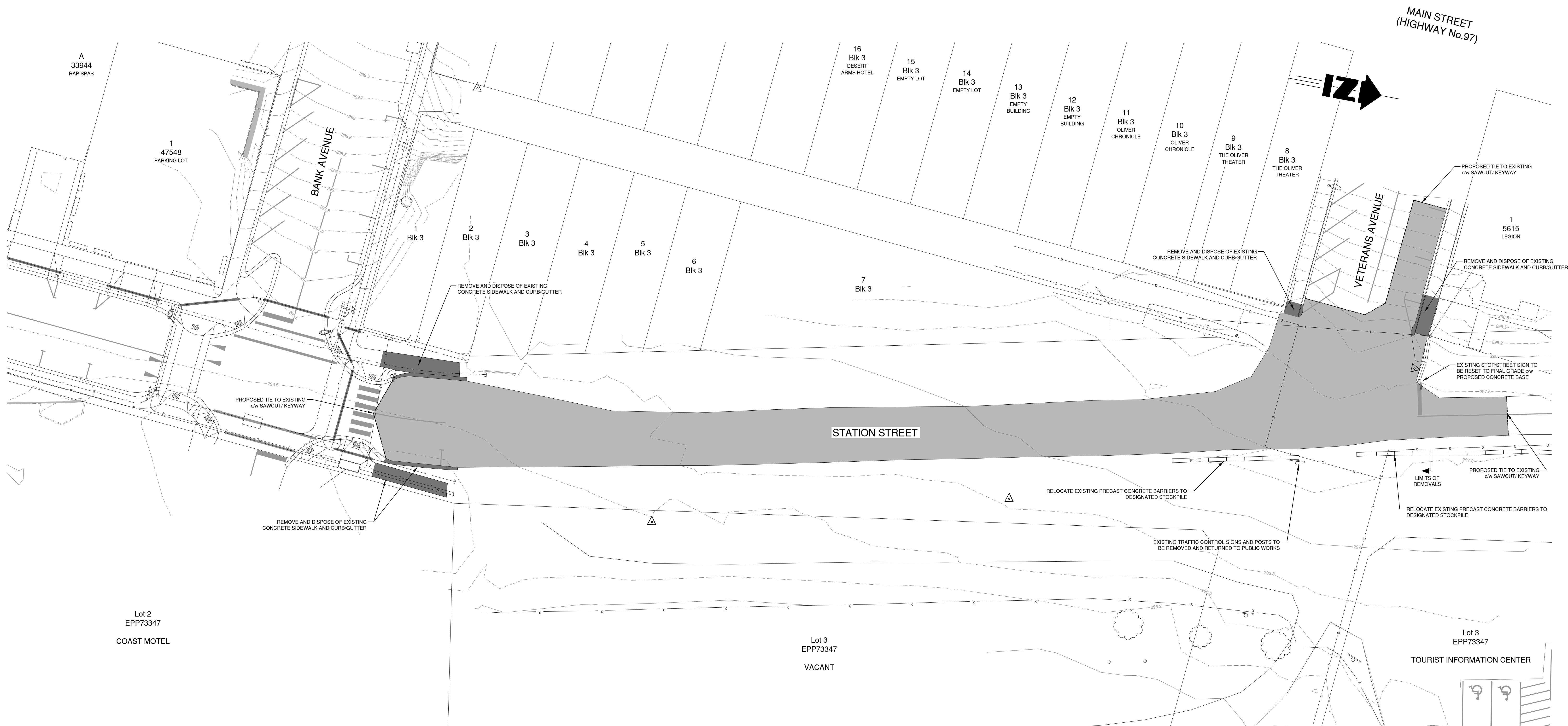
**Oliver**  
CANADA'S WINE CAPITAL

**STATION STREET RECONSTRUCTION  
BANK AVE to VETERANS AVE**

**OVERALL PLAN**

SCALE 0 1:250 10

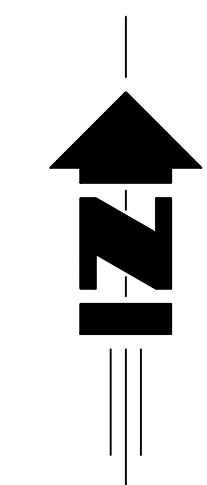
DESIGN BY TT  
DRAWN BY DM  
DATE JUNE 2021  
PROJECT REFERENCE No. 306-1674  
DRAWING No. SHEET  
**306-1674-02**  
REVISION **2**



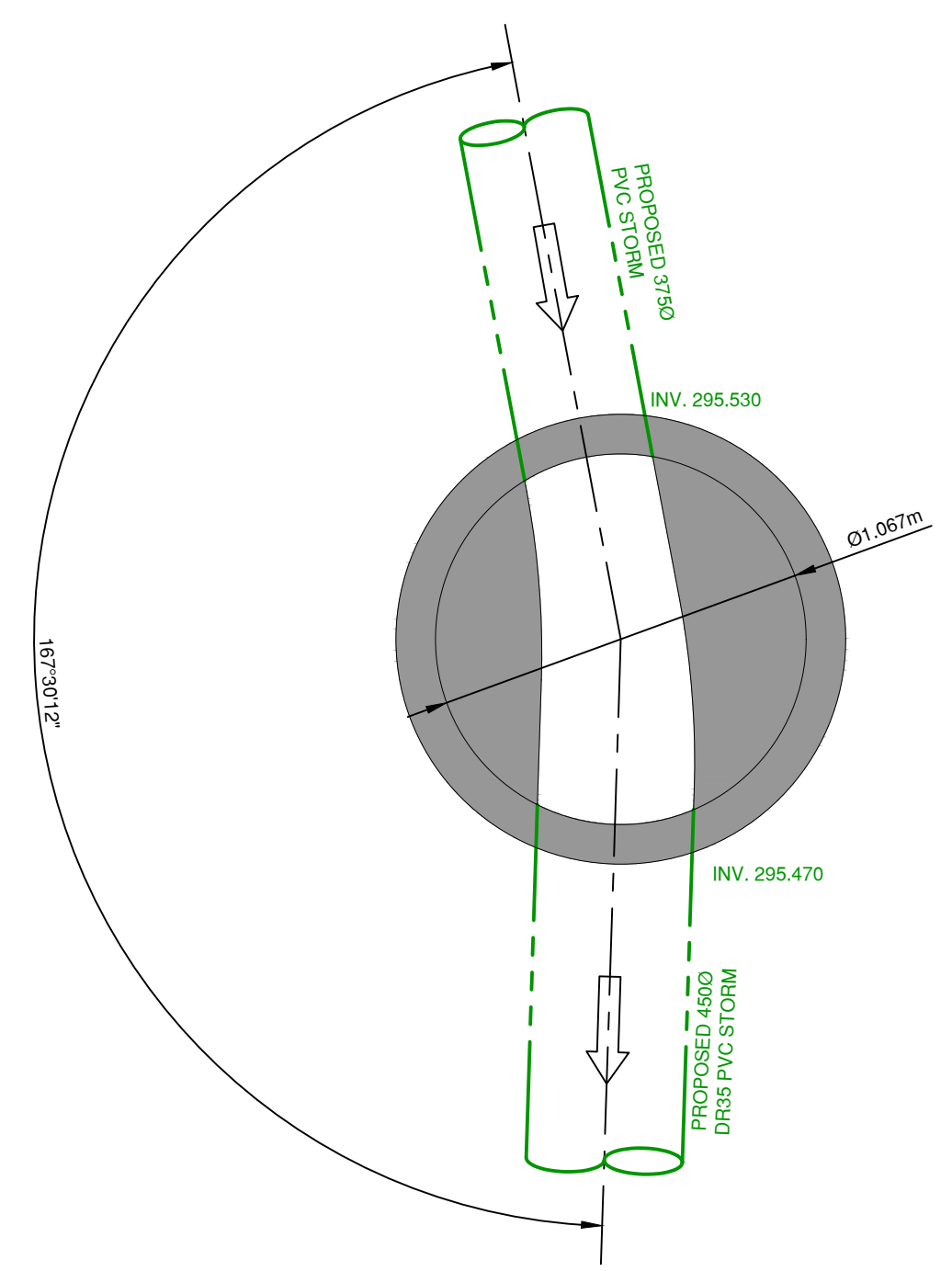
DENOTES PROPOSED ASPHALT SURFACE REMOVALS  
 DENOTES PROPOSED CONCRETE SURFACE REMOVALS

	<table border="1" style="width: 100%; border-collapse: collapse;"> <tr> <td style="width: 5%; text-align: center;">2</td> <td style="width: 15%;">AUG 31 2021</td> <td style="width: 55%;">ISSUED FOR CONSTRUCTION</td> <td style="width: 10%;">TT</td> <td style="width: 15%;">SU</td> </tr> <tr> <td style="text-align: center;">1</td> <td>JULY 08 2021</td> <td>ISSUED FOR TENDER</td> <td>TT</td> <td>SU</td> </tr> <tr> <td style="text-align: center;">No.</td> <td>DATE</td> <td>DESCRIPTION</td> <td>BY</td> <td>APP'D</td> </tr> </table>	2	AUG 31 2021	ISSUED FOR CONSTRUCTION	TT	SU	1	JULY 08 2021	ISSUED FOR TENDER	TT	SU	No.	DATE	DESCRIPTION	BY	APP'D	<p>201 - 2079 Falcon Road ■ Kamloops BC ■ V2C 4J2 tel 250.828.0881 ■ fax 250.828.0717 info@TRUE.bc.ca</p>	<p><b>STATION STREET RECONSTRUCTION</b> <b>BANK AVE to VETERANS AVE</b></p>	<p><b>SURFACE REMOVALS</b></p>	<p>SCALE 0 1:250 10</p> <p>DESIGN BY TT</p> <p>DRAWN BY DM</p> <p>DATE AUGUST 2021</p> <p>PROJECT REFERENCE No. 306-1674</p> <p>DRAWING No. <b>306-1674-03</b> SHEET <b>2</b></p>
2	AUG 31 2021	ISSUED FOR CONSTRUCTION	TT	SU																
1	JULY 08 2021	ISSUED FOR TENDER	TT	SU																
No.	DATE	DESCRIPTION	BY	APP'D																

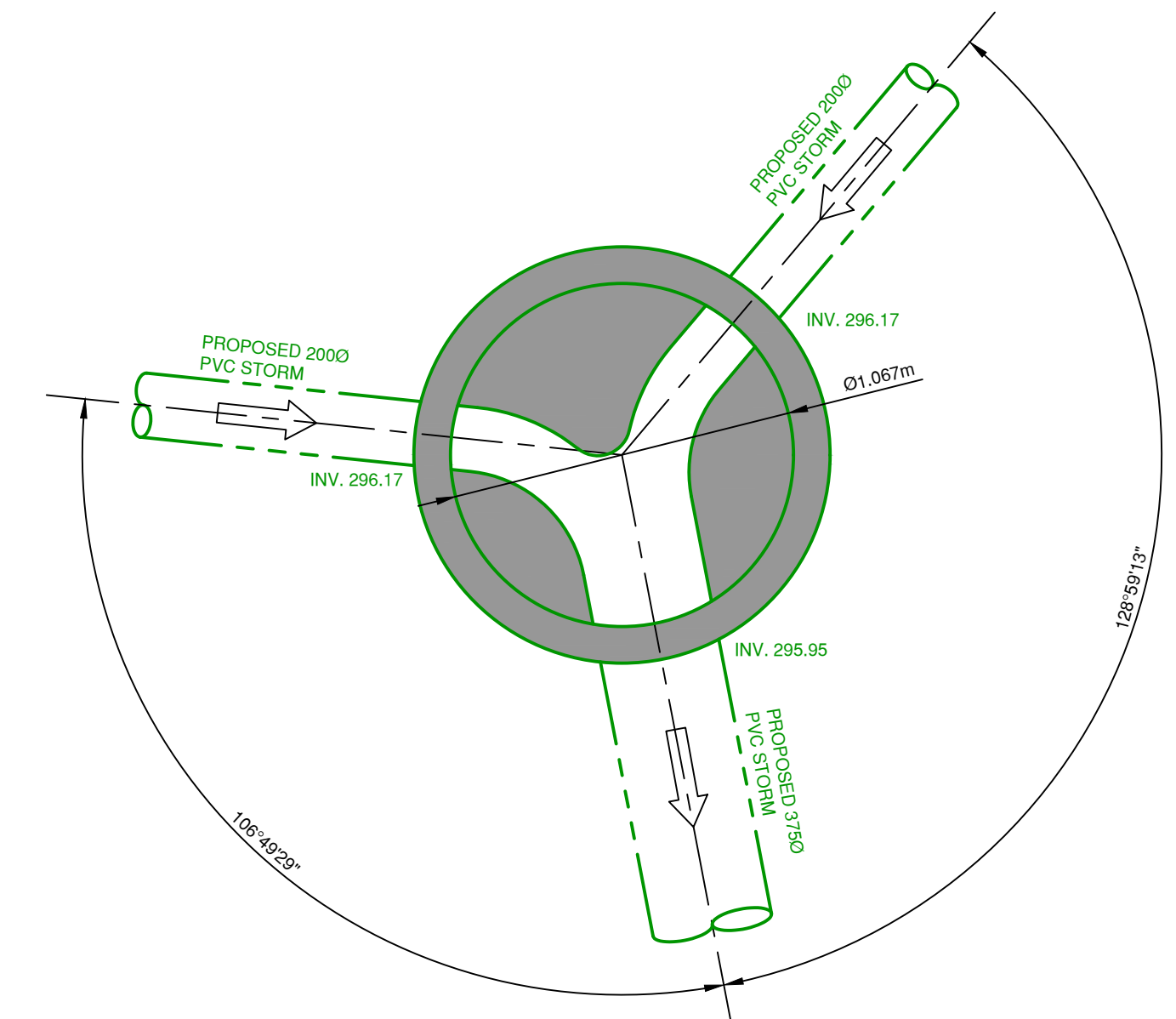




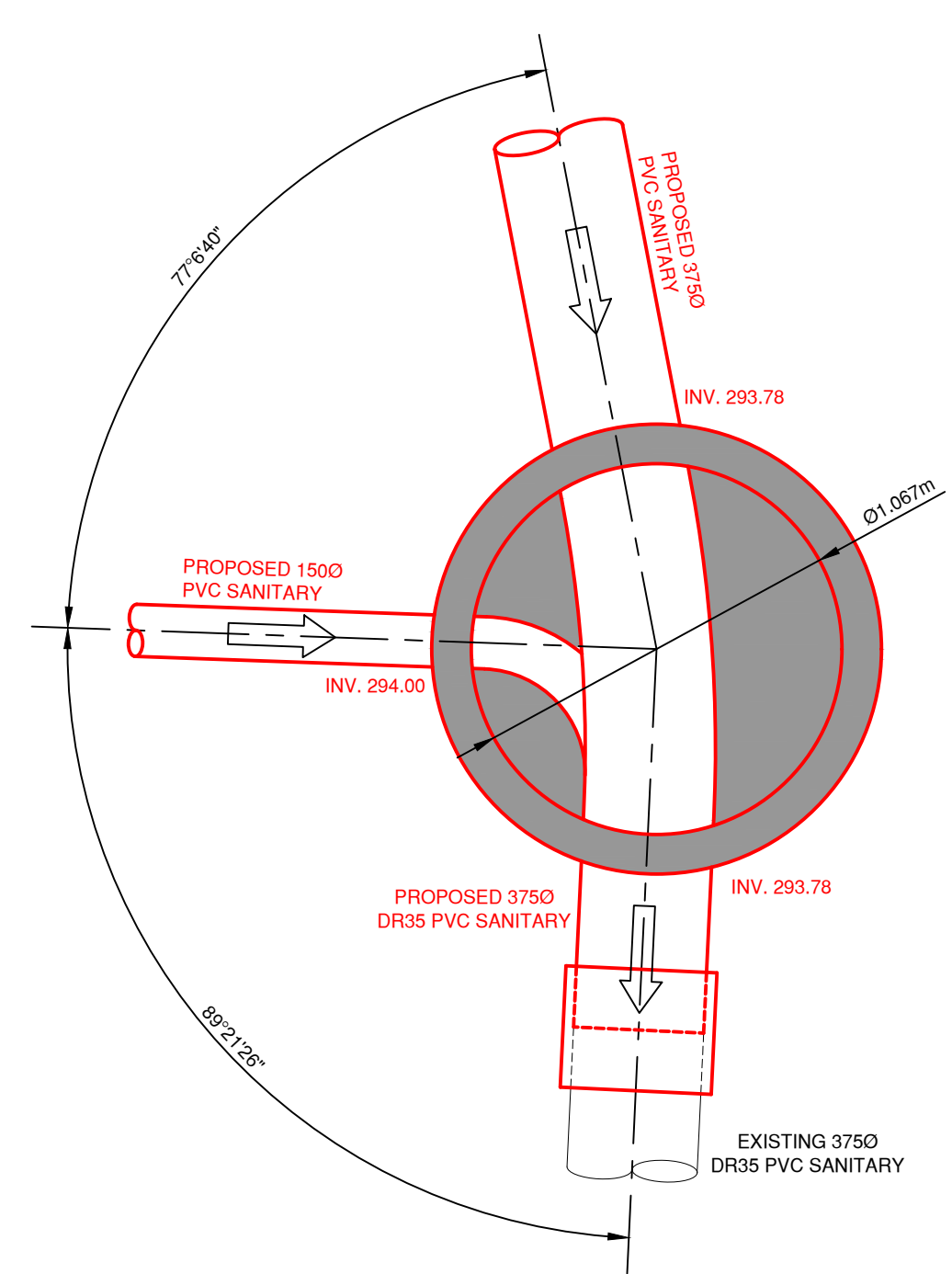
### STORM MANHOLE ST1 (RELOCATED MANHOLE)



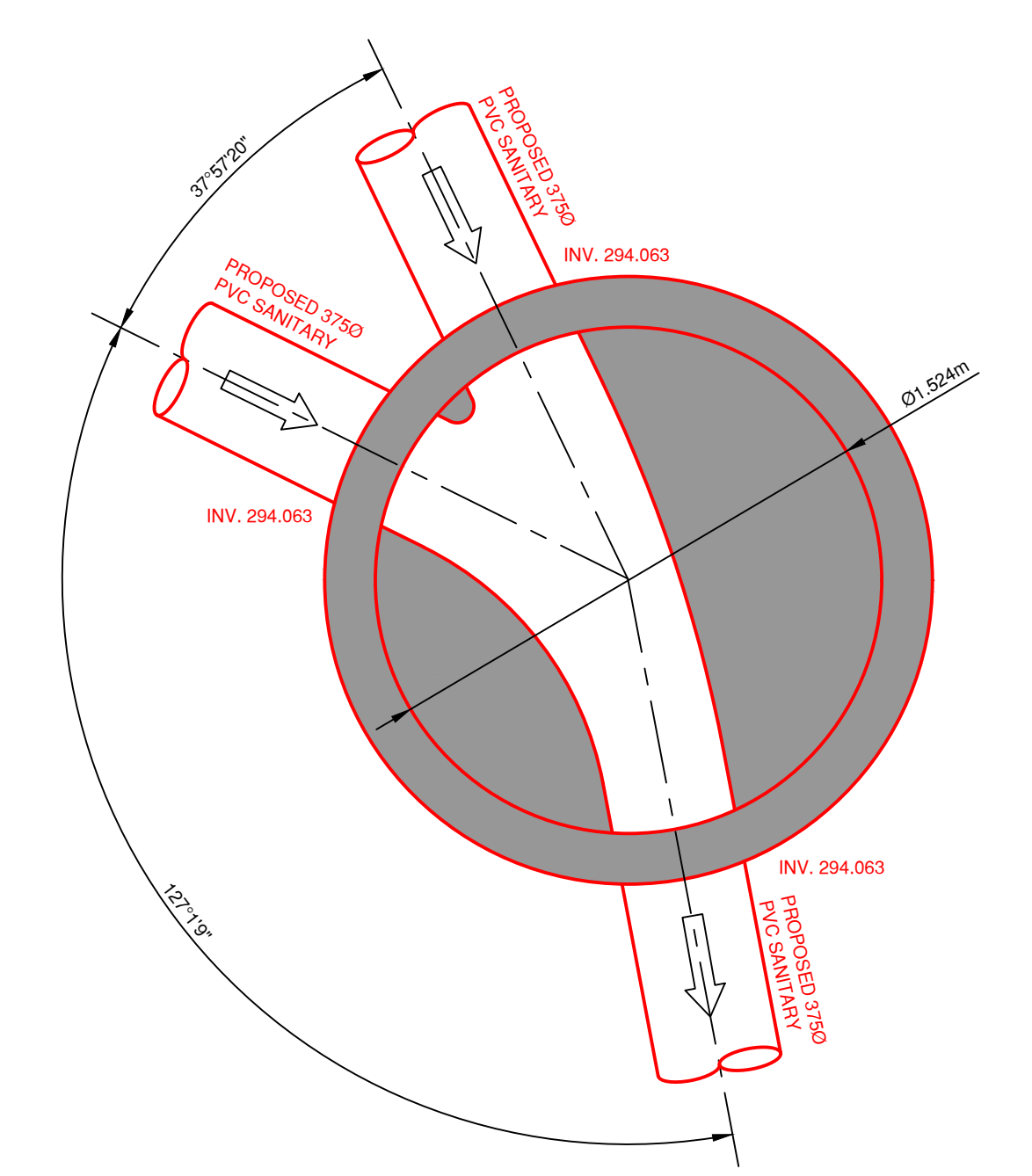
### STORM MANHOLE ST3



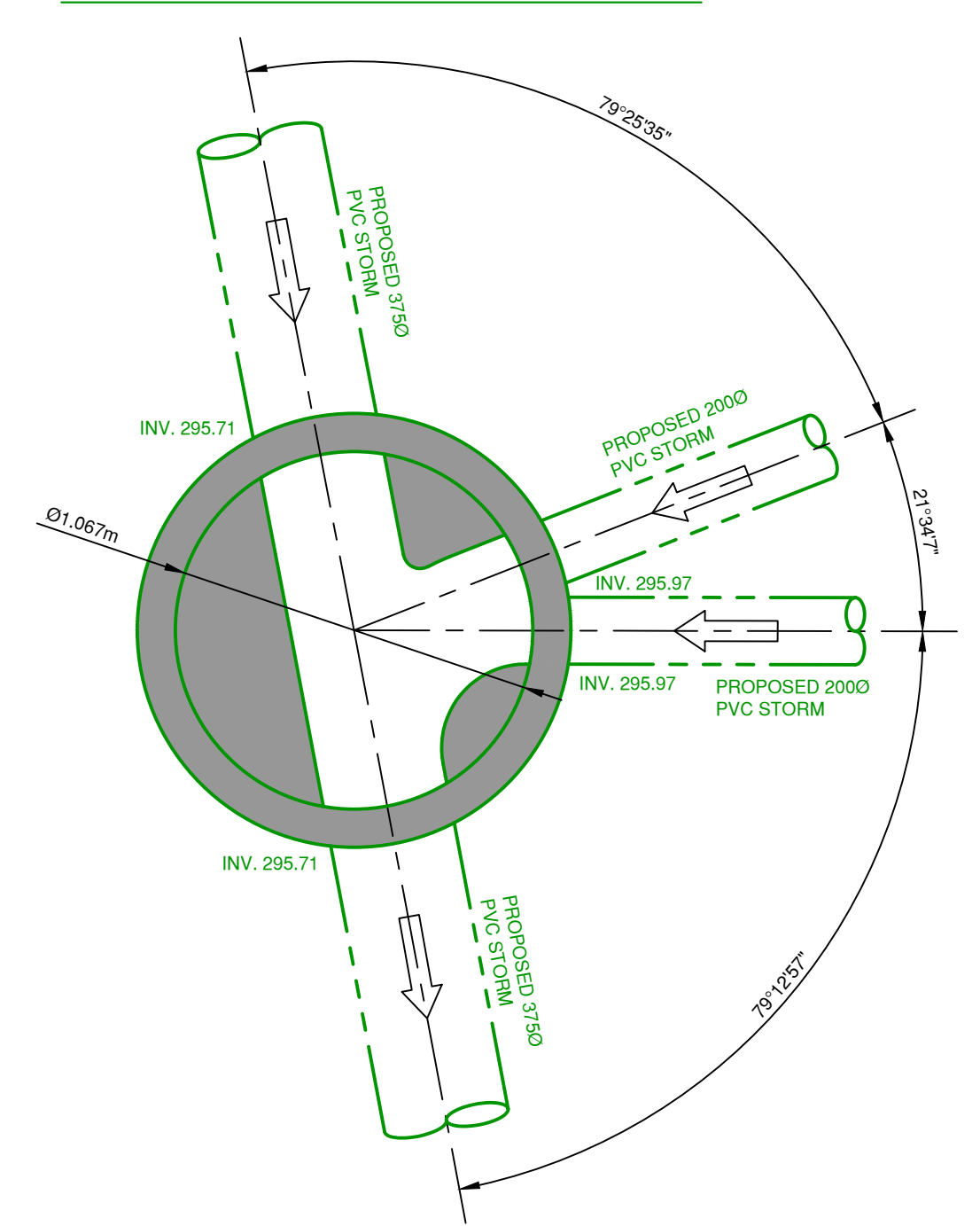
### SANITARY MANHOLE S1



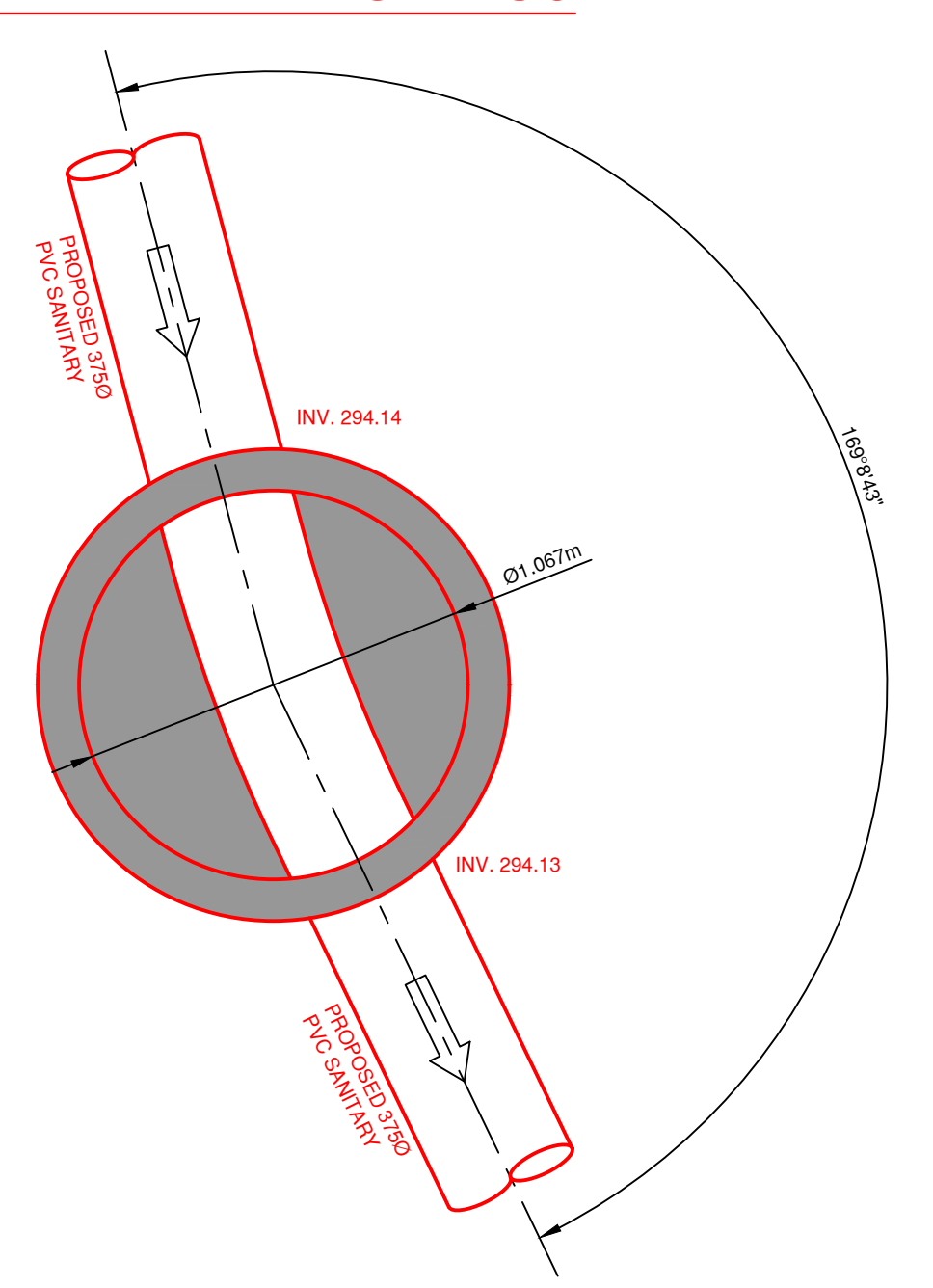
### SANITARY MANHOLE S2



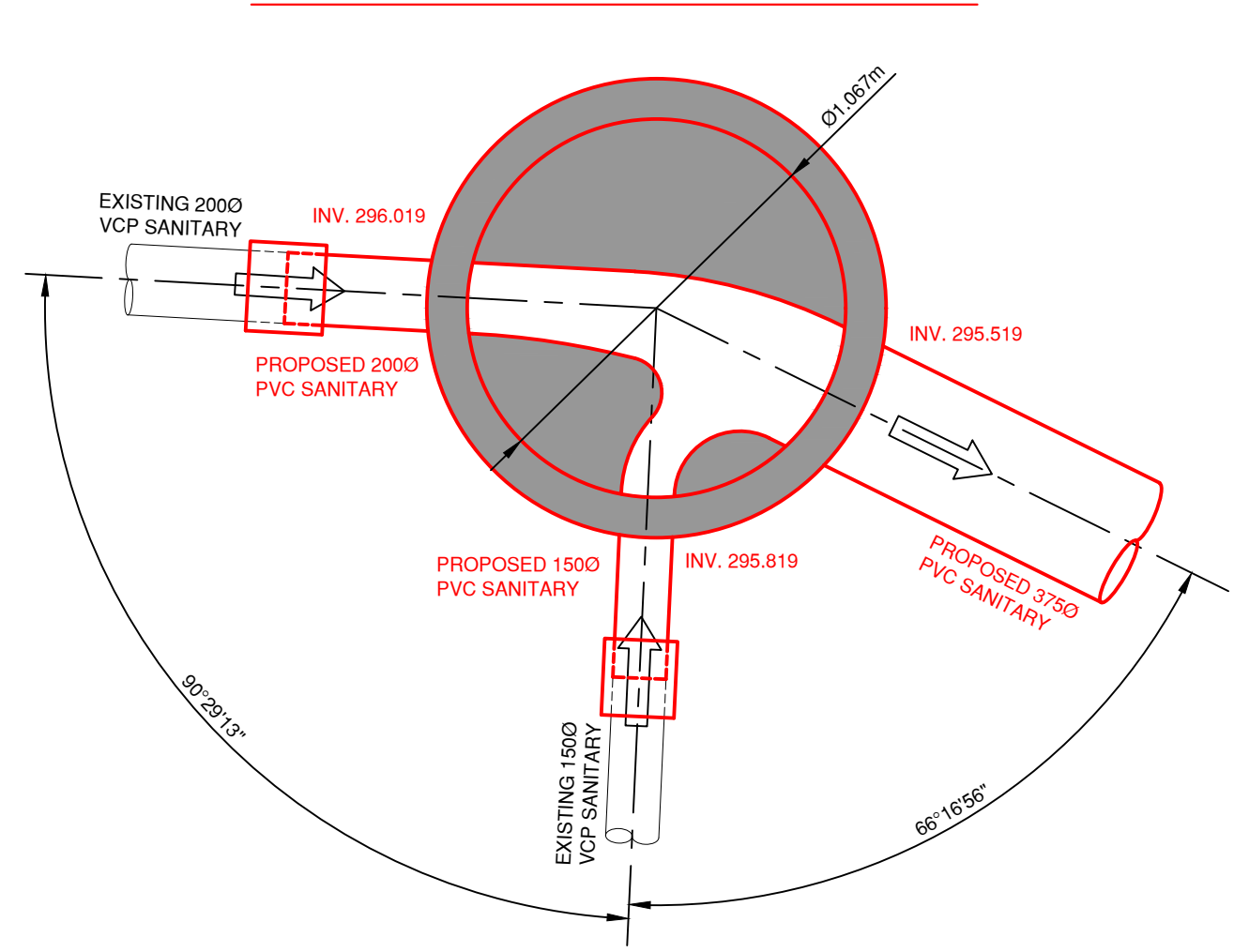
### STORM MANHOLE ST2



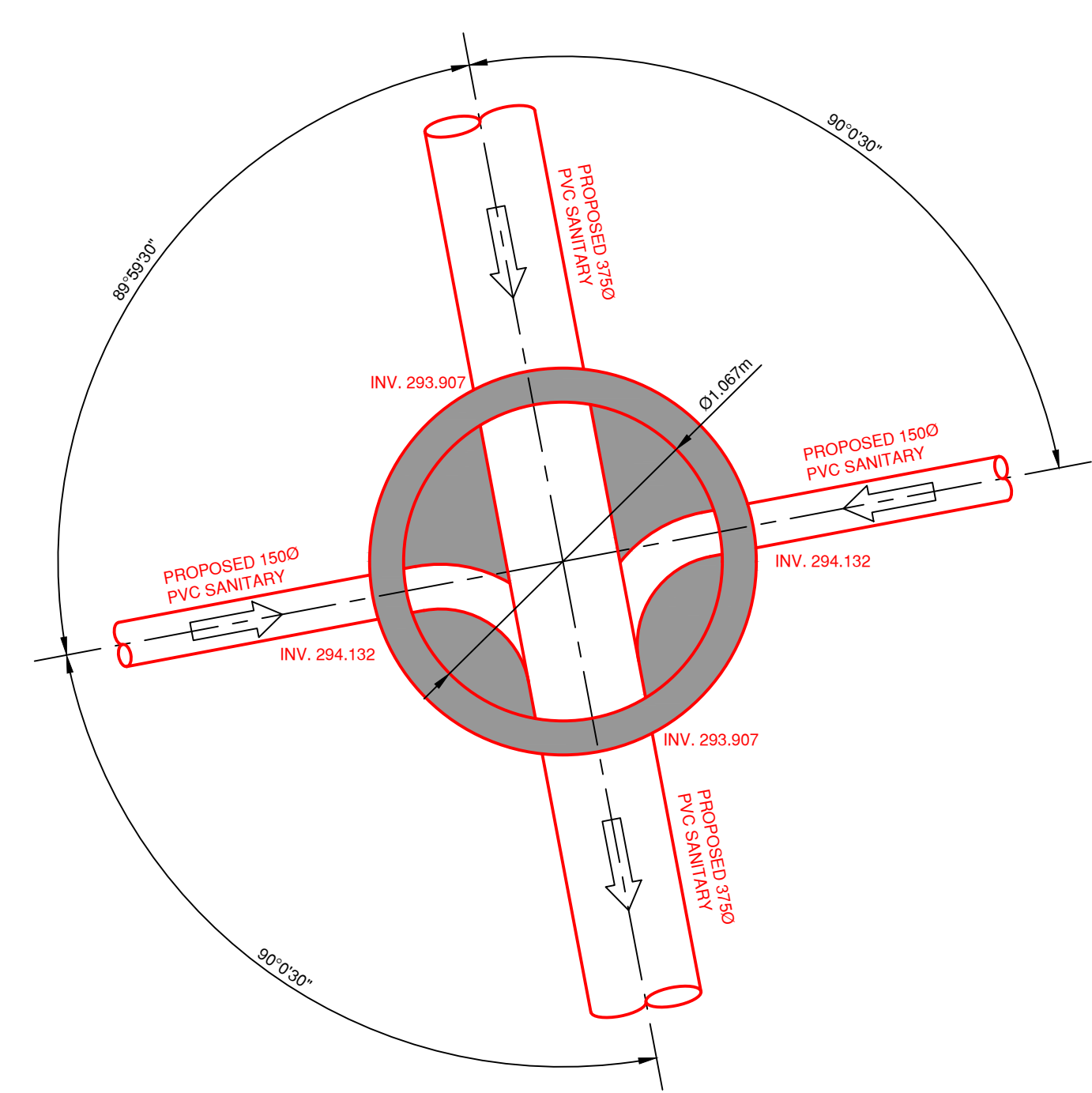
### SANITARY MANHOLE S3



### SANITARY MANHOLE S4



### SANITARY MANHOLE S5



ALL PROPOSED SANITARY SEWER MANHOLES SHALL HAVE FIBERGLASS LINED BASES.

- NOTES:**
1. EXPOSED ENDS OF PROPOSED ABANDON PIPES ARE TO BE CAPPED AT TIE POINTS UNLESS SHOWN OTHERWISE.
  2. ALL PROPOSED SANITARY SEWER MANHOLES SHALL HAVE FIBERGLASS LINED BASES.
  3. ALL PROPOSED CATCH BASINS ARE "CURB INLET" TYPE. GRATE ELEVATIONS ARE 25mm LOWER THAN GUTTERLINE GRADE.
  4. APPROVED STORM SEWER PIPE TYPES c/w 19mm MINUS CRUSHED GRAVEL BEDDING:  
 450mm Dia. (KOR-FLO or DR35 PVC)  
 375mm Dia. (KOR-FLO or DR35 PVC)  
 300mm Dia. (KOR-FLO or DR35 PVC)  
 250mm Dia. (KOR-FLO or DR35 PVC)  
 200mm Dia. (KOR-FLO or DR35 PVC)

No.	DATE	DESCRIPTION	BY	APP'D
3	AUG 31/21	ISSUED FOR CONSTRUCTION	TT	SU
2	JULY 16/21	REVISED MANHOLE "S4" INCOMING PIPING	TT	SU
1	JULY 08/21	ISSUED FOR TENDER	TT	SU

ISSUES / REVISIONS	

**TRUE CONSULTING**

201 - 2079 Falcon Road ■ Kamloops BC ■ V2C 4J2  
 tel 250.828.0881 ■ fax 250.828.0717  
 info@TRUE.bc.ca

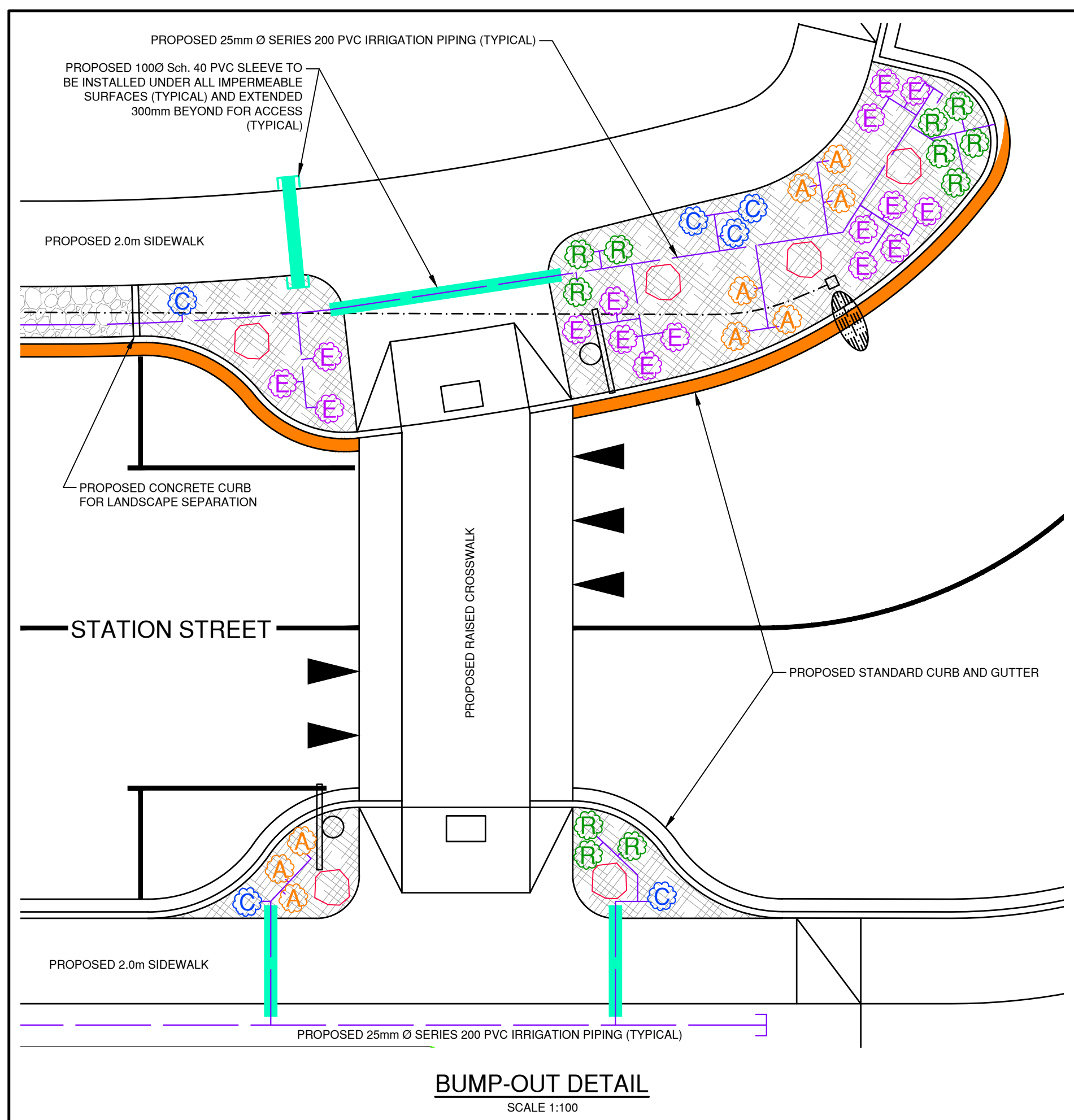
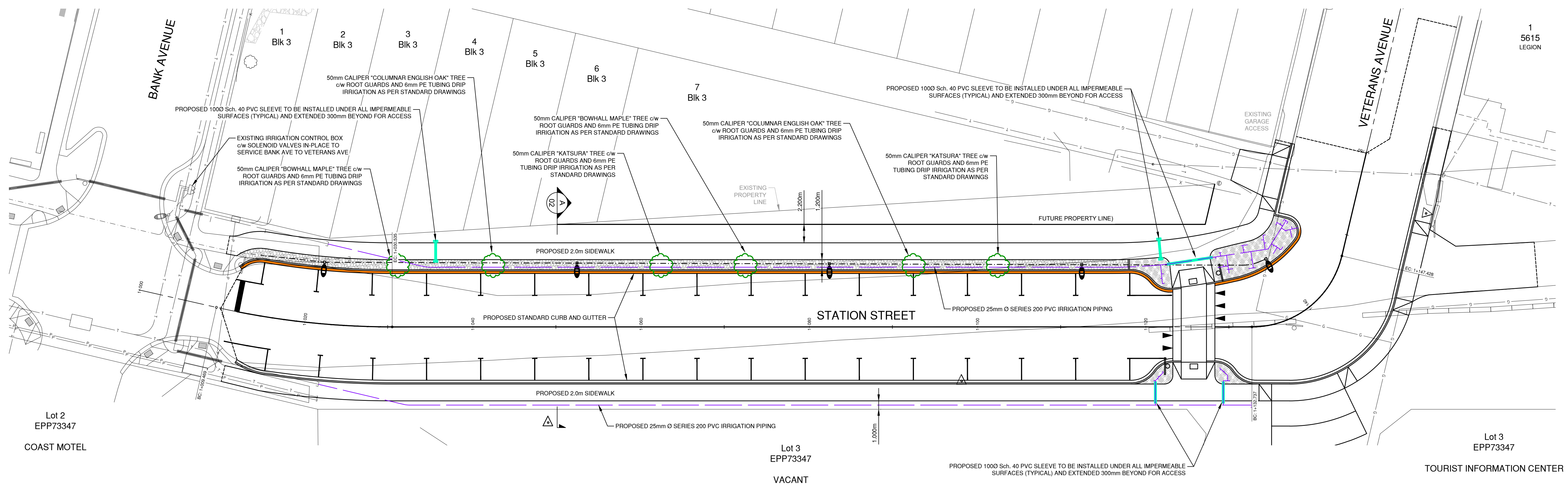
**Town of Oliver**  
 CANADA'S WINE CAPITAL

**STATION STREET RECONSTRUCTION  
 BANK AVE to VETERANS AVE**

**MANHOLE DETAILS**

SCALE	1:20
DESIGN BY	TT
DRAWN BY	DM
DATE	AUGUST 2021
PROJECT REFERENCE No.	306-1674
DRAWING No.	SHEET
<b>306-1674-05</b>	<b>3</b>
REVISION	

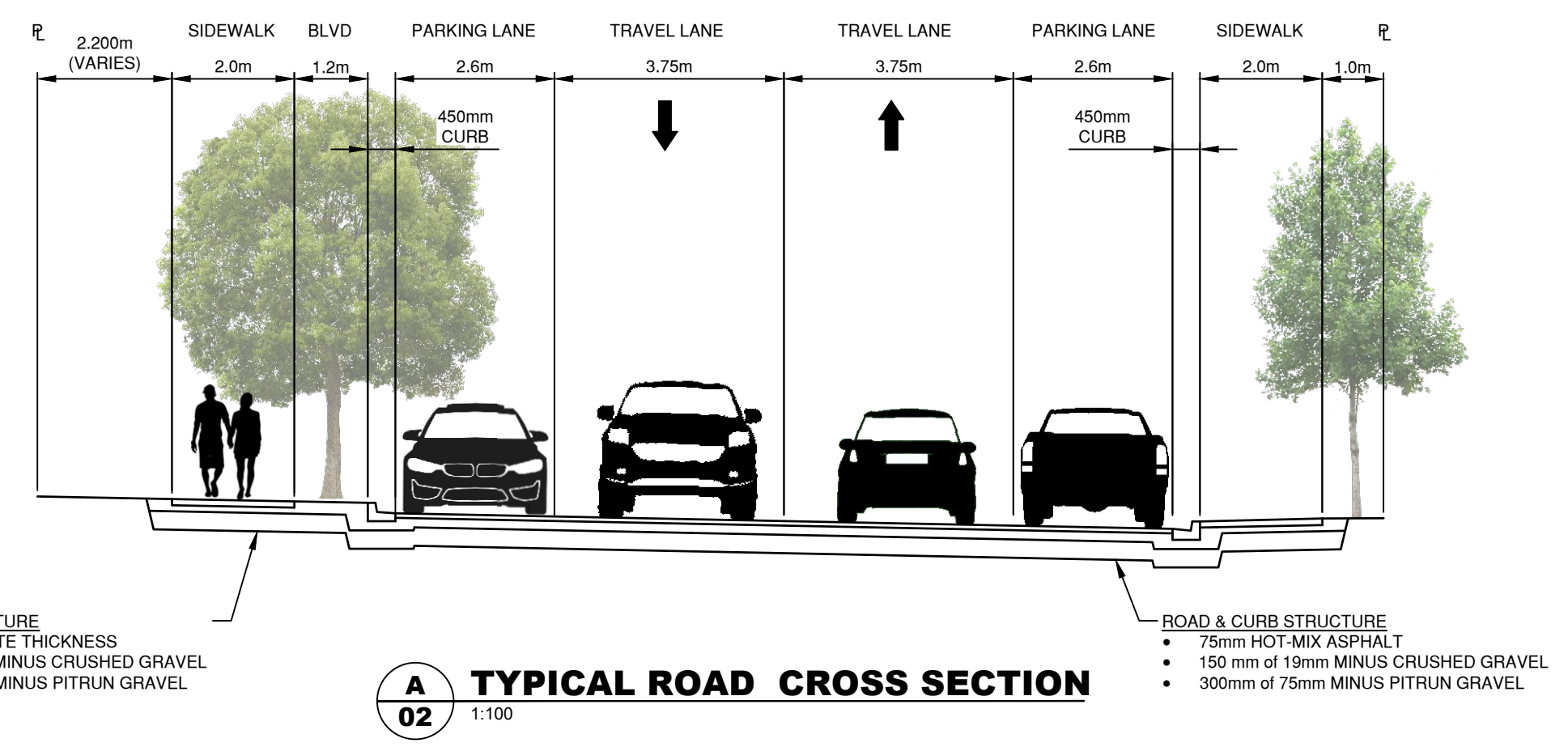




**LEGEND**

- ACHILLEA MILLEFOLIUM (9)
- CALAMAGROSTIS KARL FOERSTER (6)
- ECHINACEA PURPUREA (16)
- RUDBECKIA FULGIDA (11)
- LARGE LANDSCAPE ROCK +/-900mmØ (6)
- LANDSCAPE MULCH
- DECORATIVE SMALL ROCK

- NOTES:**
- IRRIGATION SYSTEM TO BE TESTED UPON INSTALLATION COMPLETION AND INCLUDE EMITTERS.
  - PLANTING LAYOUT TO BE FINALIZED WITH TOWN OF OLIVER PUBLIC WORKS



DENOTES PROPOSED STANDARD CURB c/w REVERSE GUTTER

No.	DATE	DESCRIPTION	BY	APP'D
2	AUG 31/21	ISSUED FOR CONSTRUCTION	TT	SU
1	JULY 08/21	ISSUED FOR TENDER	TT	SU

ISSUES / REVISIONS

CONSULTANT SEAL

**TRUE CONSULTING**

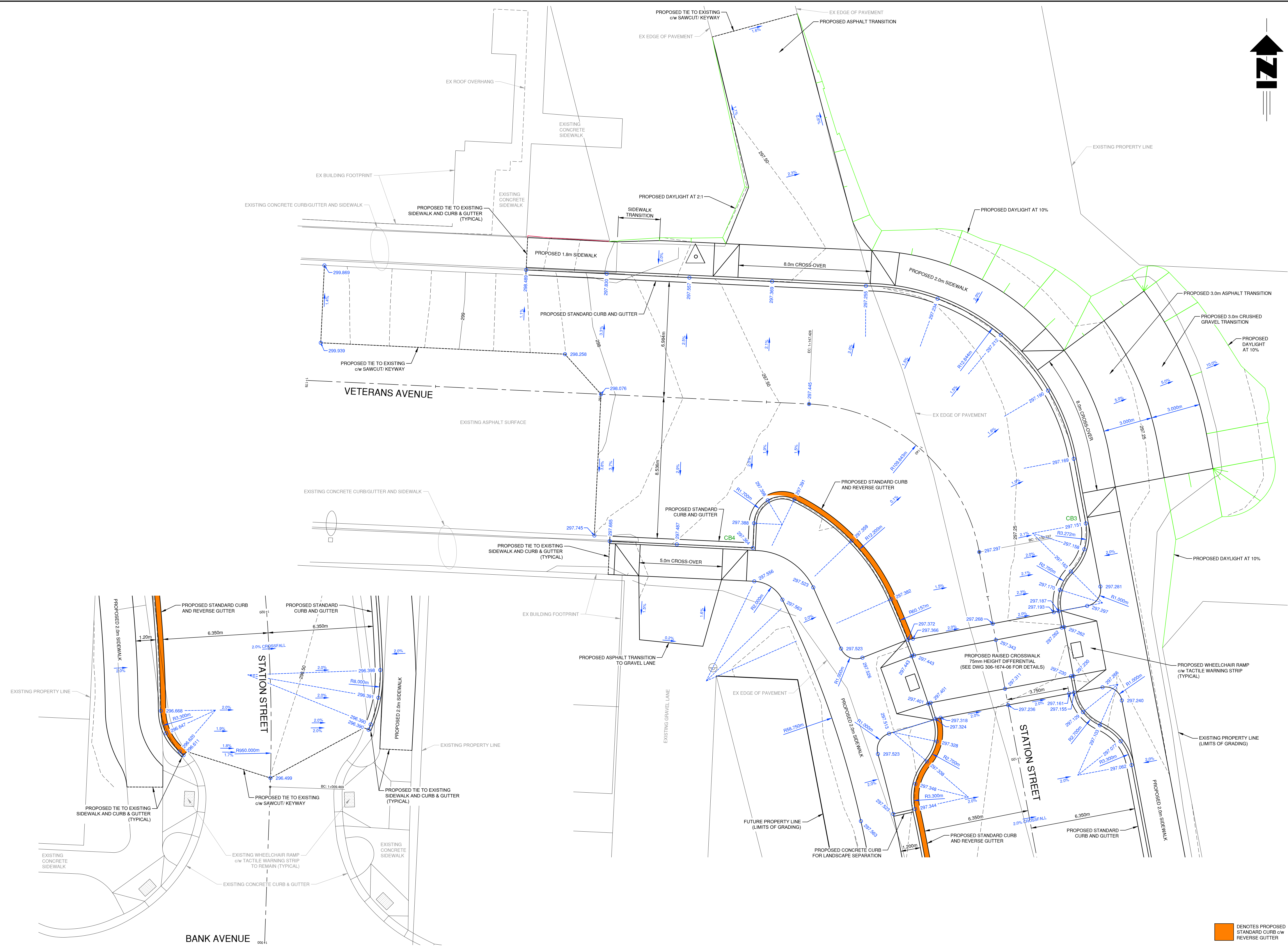
201 - 2079 Falcon Road • Kamloops BC • V2C 4J2  
tel 250.828.0881 • fax 250.828.0717  
info@TRUE.bc.ca

**Oliver**  
CANADA'S WINE CAPITAL

**STATION STREET RECONSTRUCTION  
BANK AVE to VETERANS AVE**

**LANDSCAPE PLAN AND DETAILS**

SCALE	1:250 (UNLESS NOTED)
DESIGN BY	TT
DRAWN BY	DM
DATE	AUGUST 2021
PROJECT REFERENCE No.	306-1674
DRAWING No.	SHEET
<b>306-1674-07</b>	REVISION
	<b>2</b>



■ DENOTES PROPOSED STANDARD CURB c/w REVERSE GUTTER

No.	DATE	DESCRIPTION	BY	APPD
1	AUG 31/21	ISSUED FOR CONSTRUCTION	TT	SU

ISSUES / REVISIONS

CONSULTANT SEAL



201 - 2079 Falcon Road ■ Kamloops BC ■ V2C 4J2  
tel 250.828.0881 ■ fax 250.828.0717  
info@TRUE.bc.ca

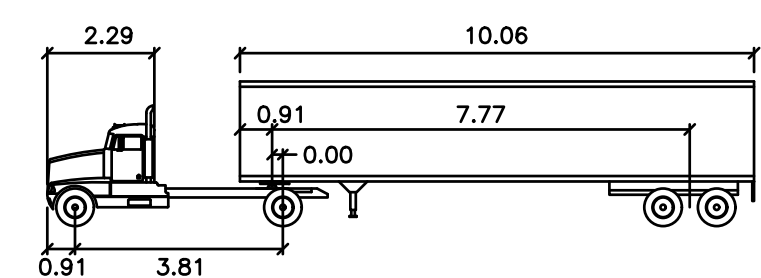
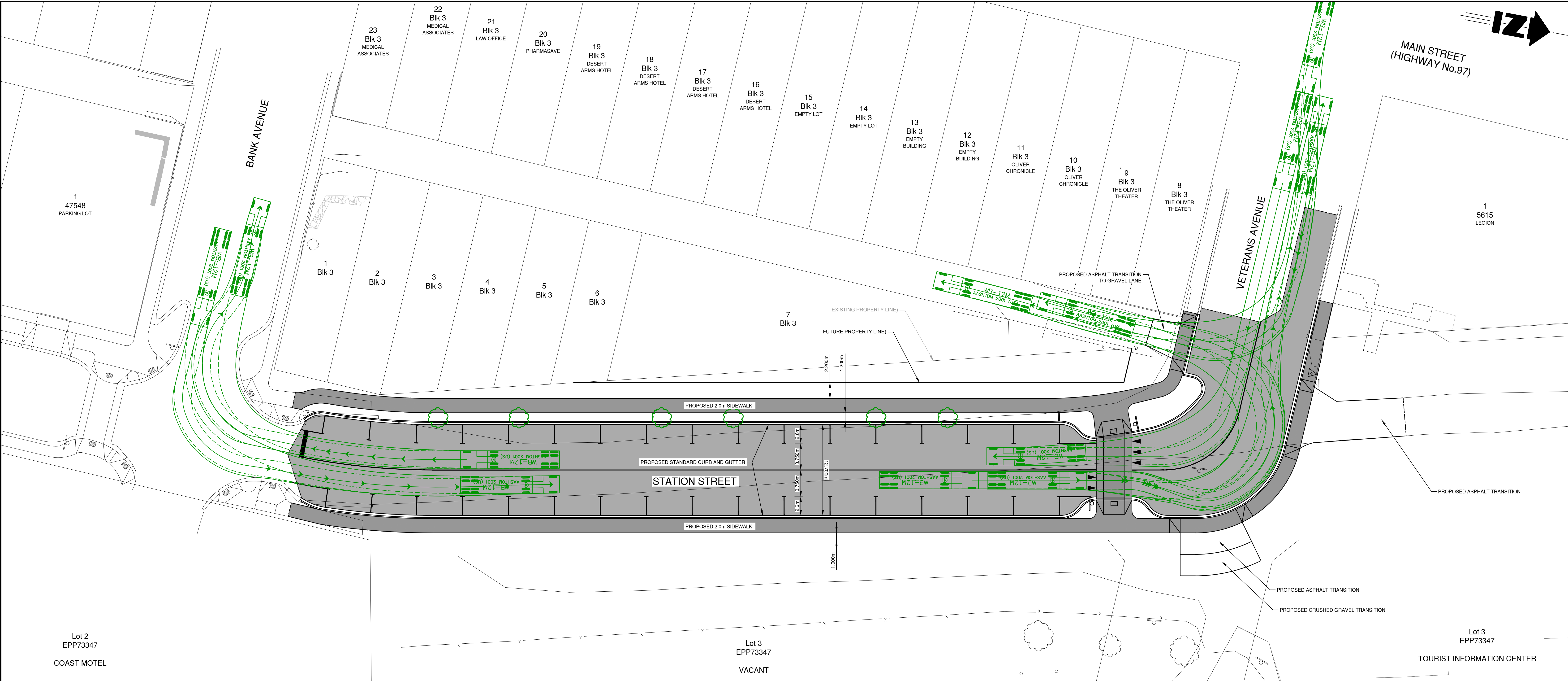


**STATION STREET  
RECONSTRUCTION  
BANK AVE to  
VETERANS AVE**

**GEOMETRICS**

SCALE	0	1:100	5
DESIGN BY	TT		
DRAWN BY	DM/TT		
DATE	AUGUST 2021		
PROJECT REFERENCE No.	306-1674		
DRAWING No.	SHEET		

**306-1674 08**  
ISSUE-REV  
**1**



**WB-12M**

meters	
Tractor Width	: 2.44
Trailer Width	: 2.44
Tractor Track	: 2.44
Trailer Track	: 2.44
Lock to Lock Time	: 6.0
Steering Angle	: 23.3
Articulating Angle	: 70.0

**WB-12M VEHICLE PROFILE**  
SCALE - N.T.S.

No.	DATE	DESCRIPTION	BY	APP'D
2	AUG 31 2021	ISSUED FOR CONSTRUCTION	TT	SU
1	JULY 08 2021	RENUMBERED DRAWING FROM 306-1674-10	TT	SU
		ISSUED FOR TENDER	TT	SU

ISSUES / REVISIONS	

**TRUE CONSULTING**

201 - 2079 Falcon Road ■ Kamloops BC ■ V2C 4J2  
tel 250.828.0881 ■ fax 250.828.0717  
info@TRUE.bc.ca

**Town of Oliver**  
CANADA'S WINE CAPITAL

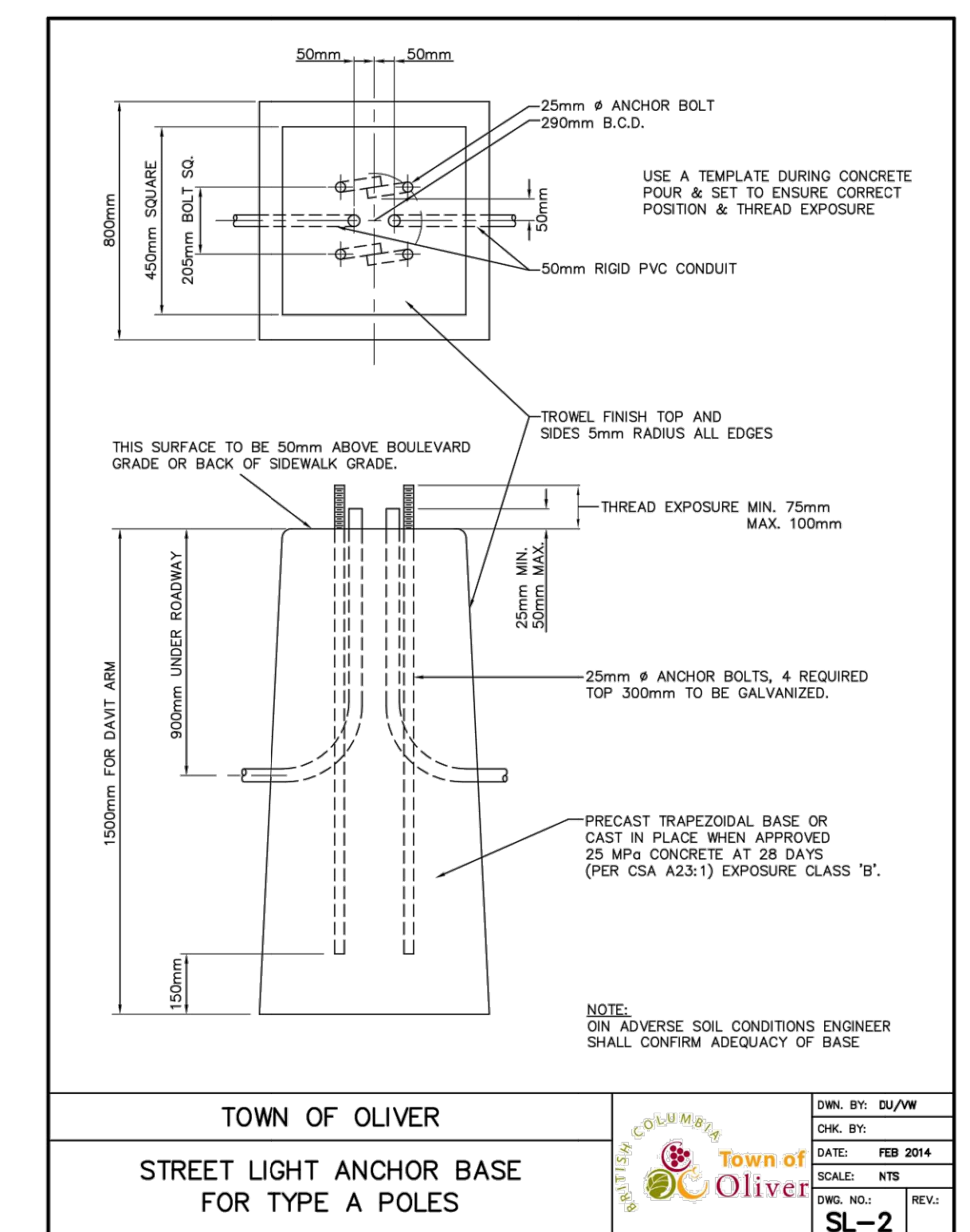
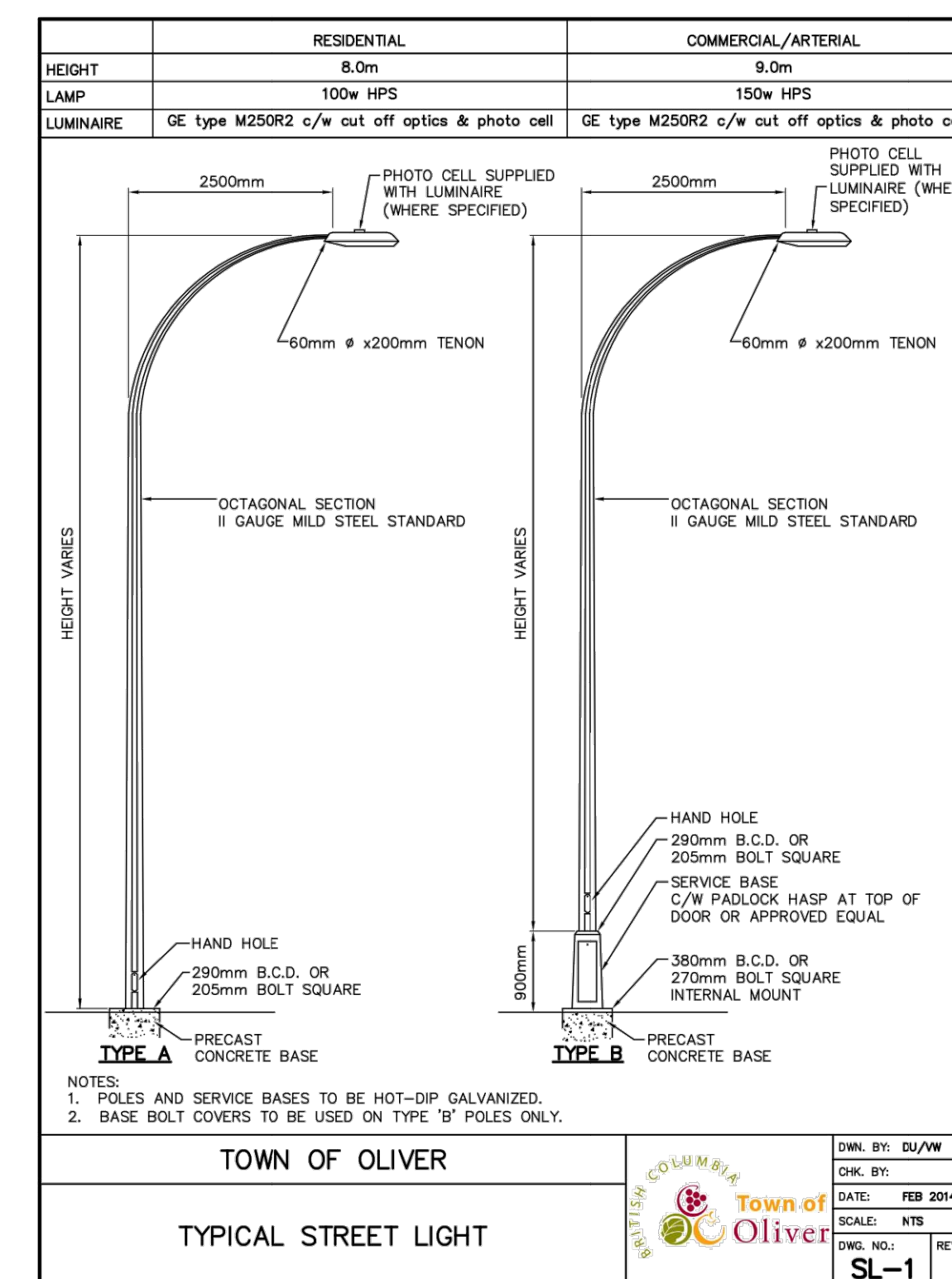
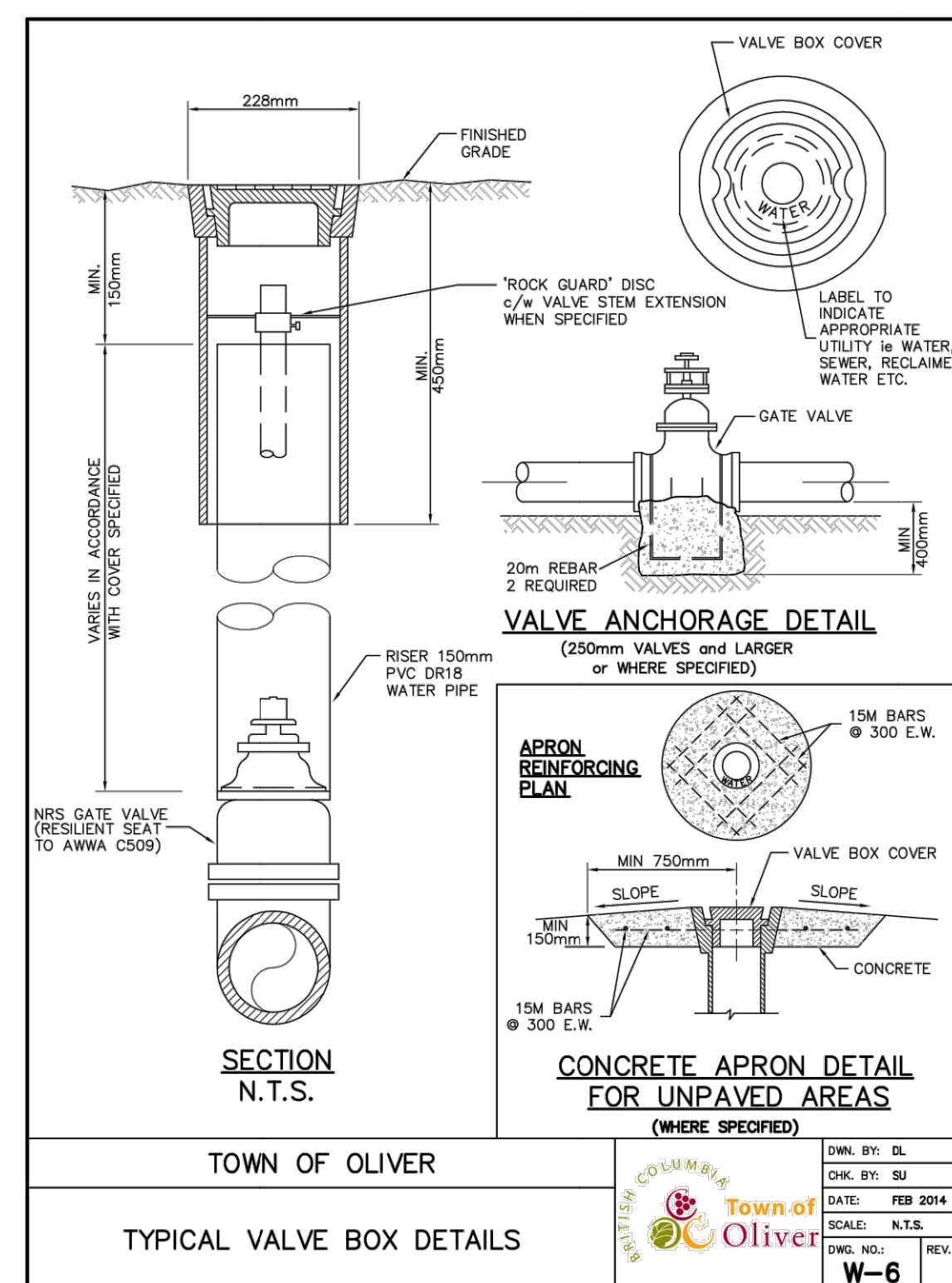
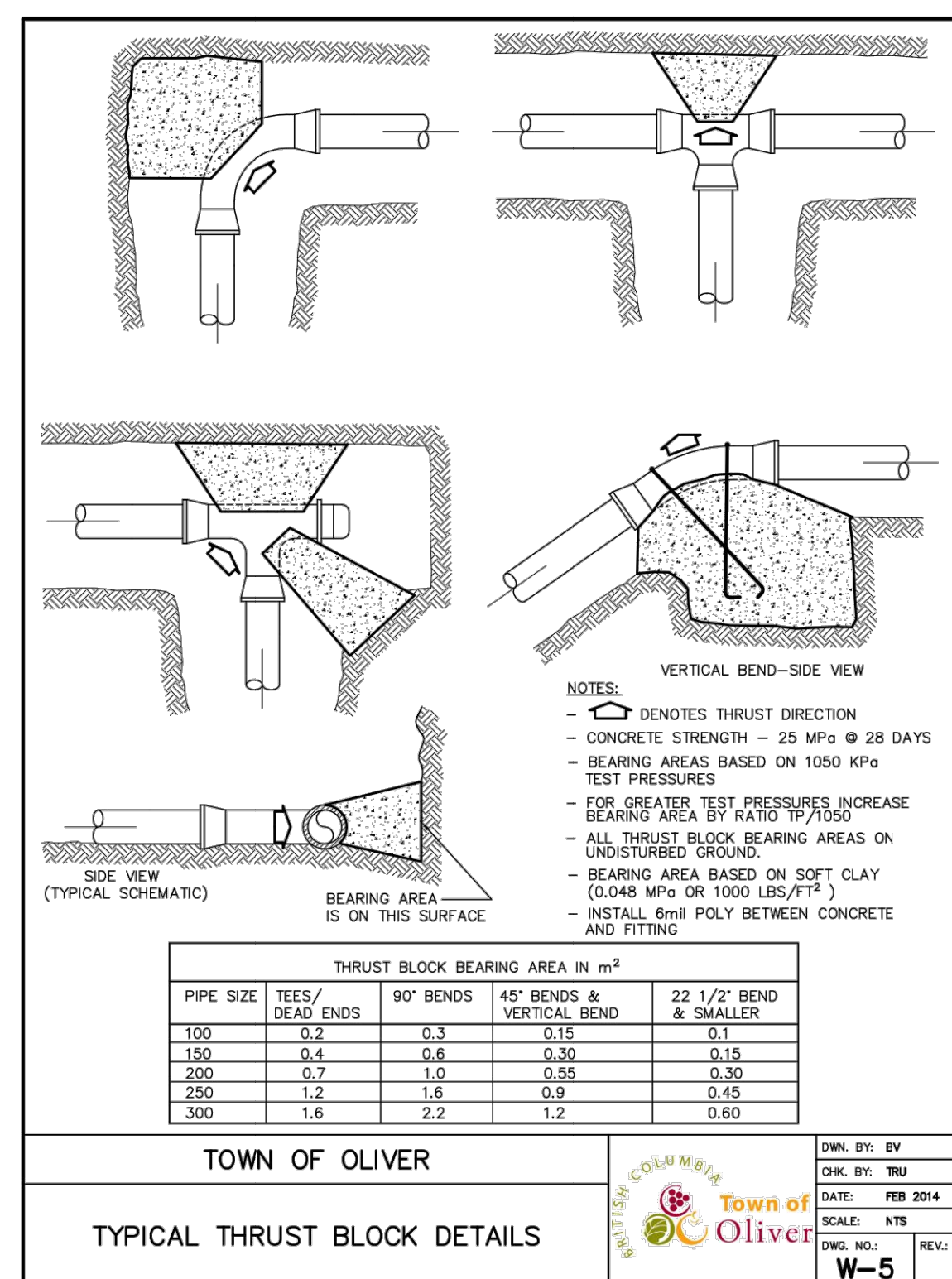
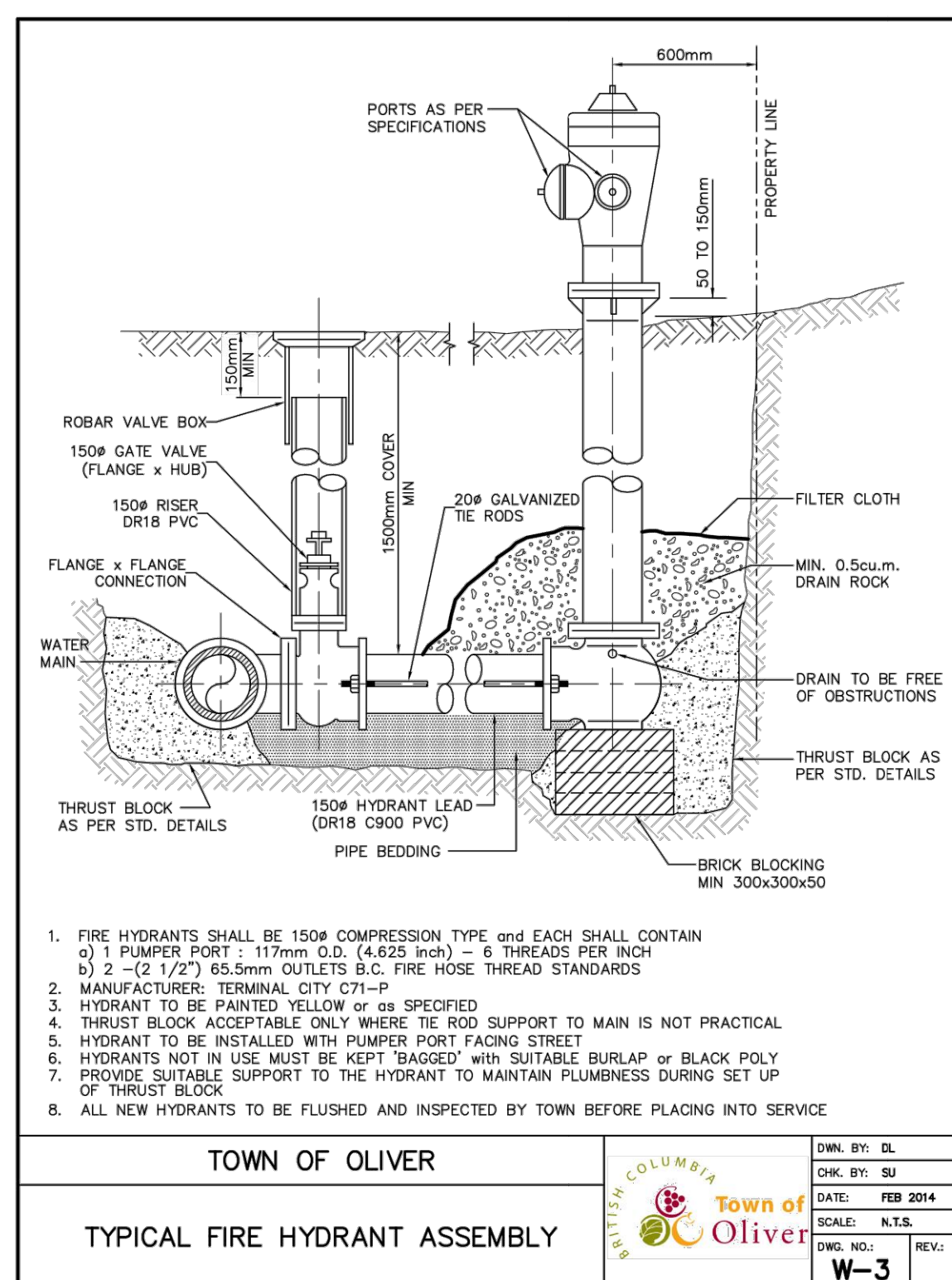
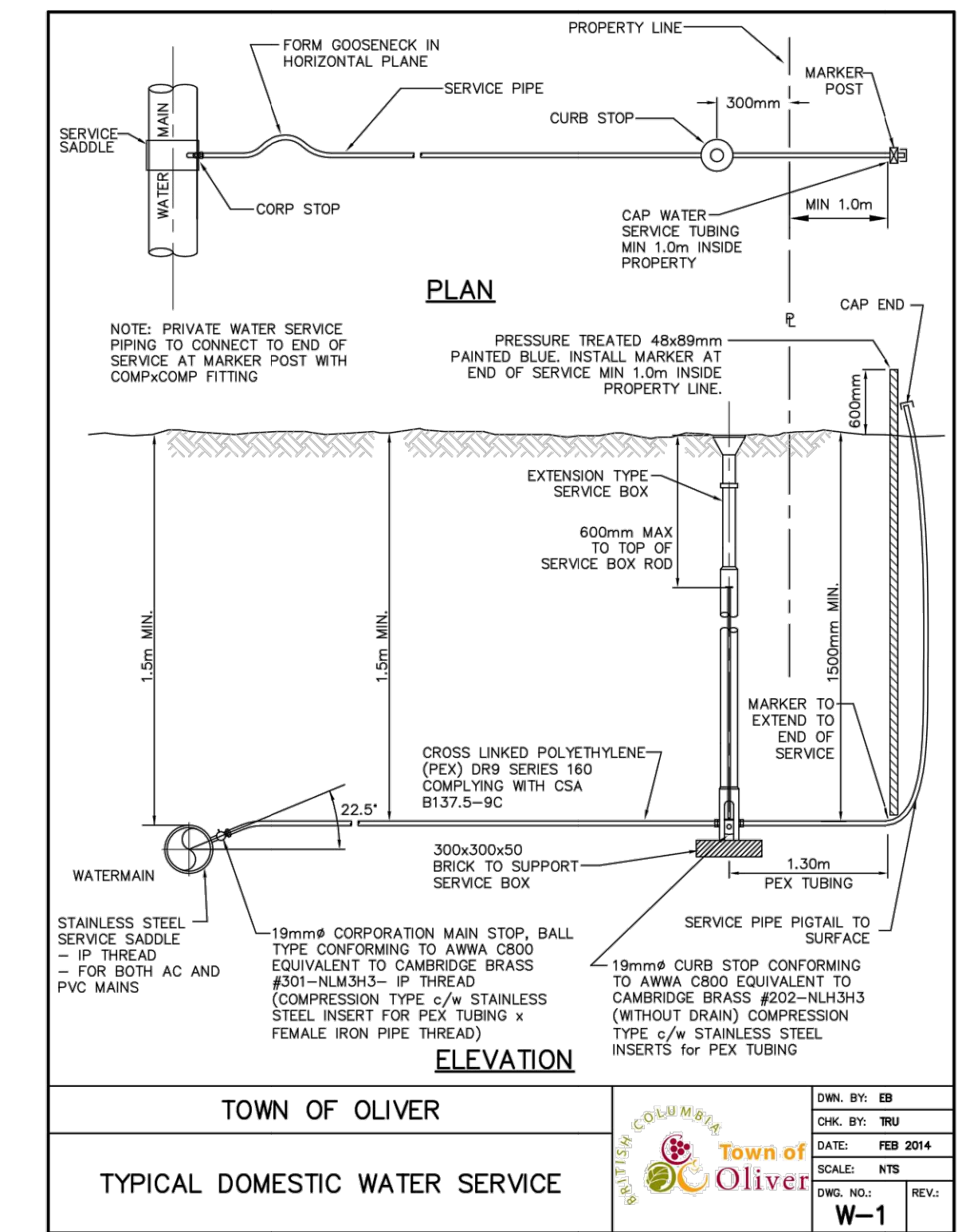
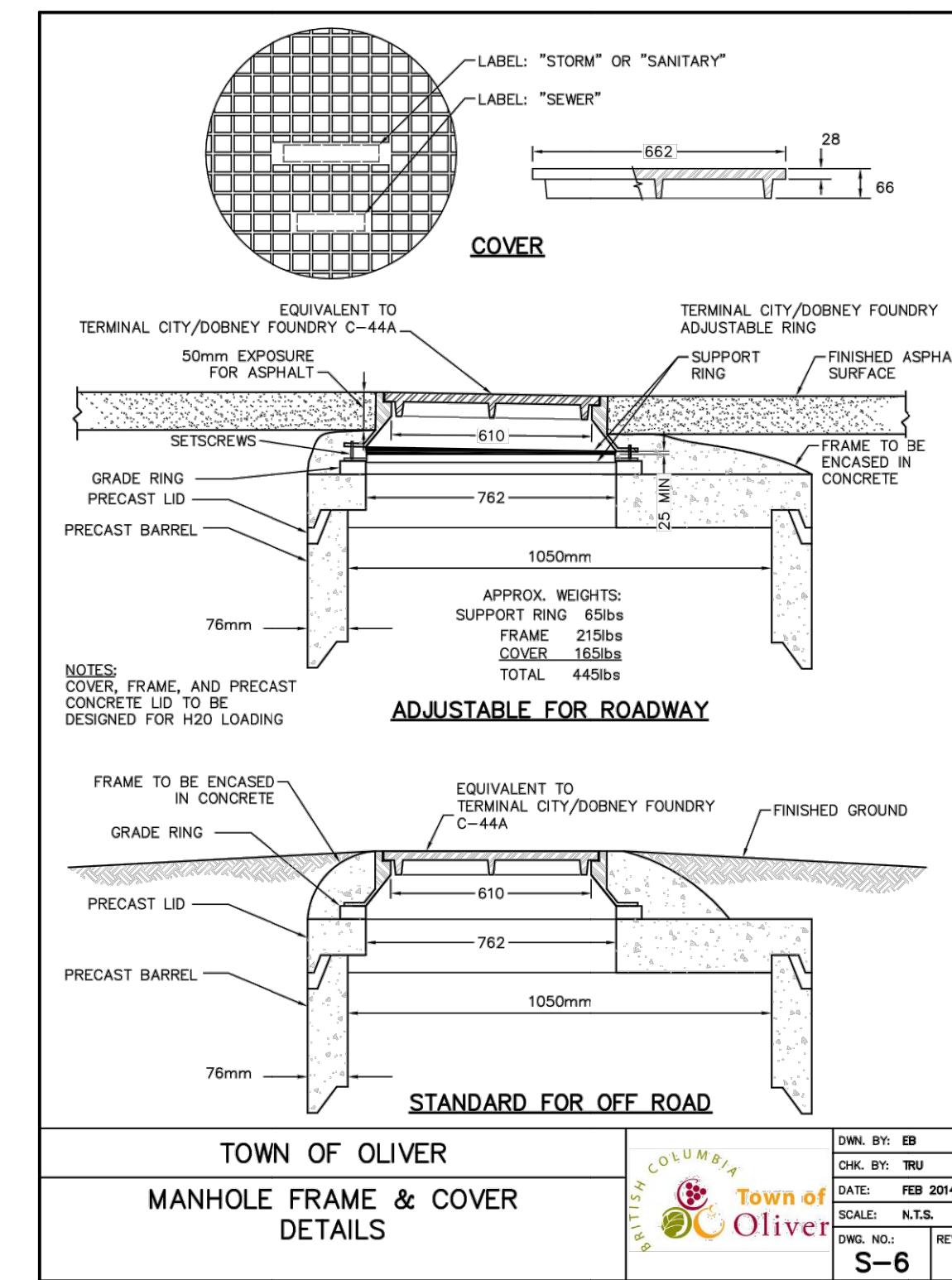
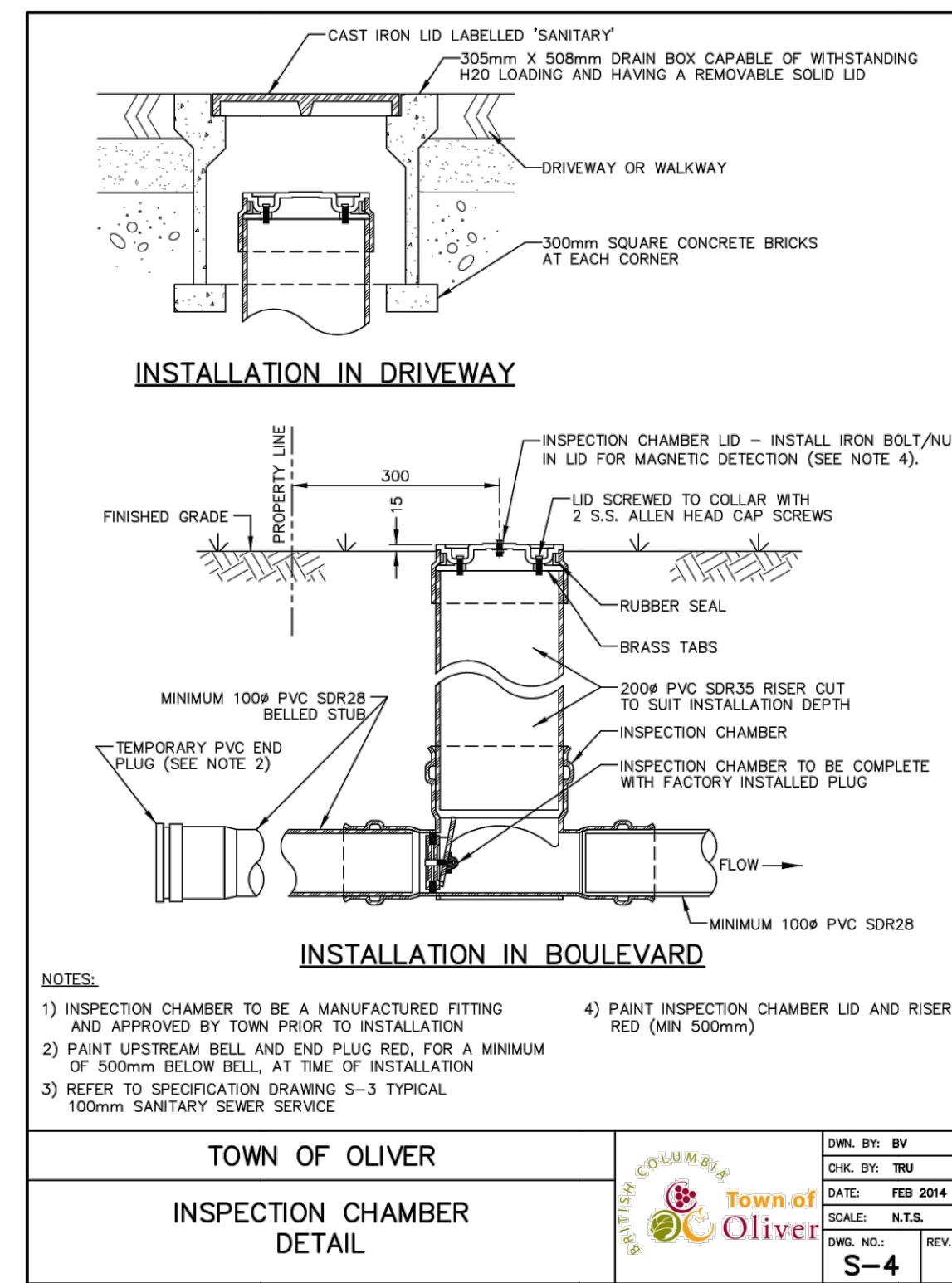
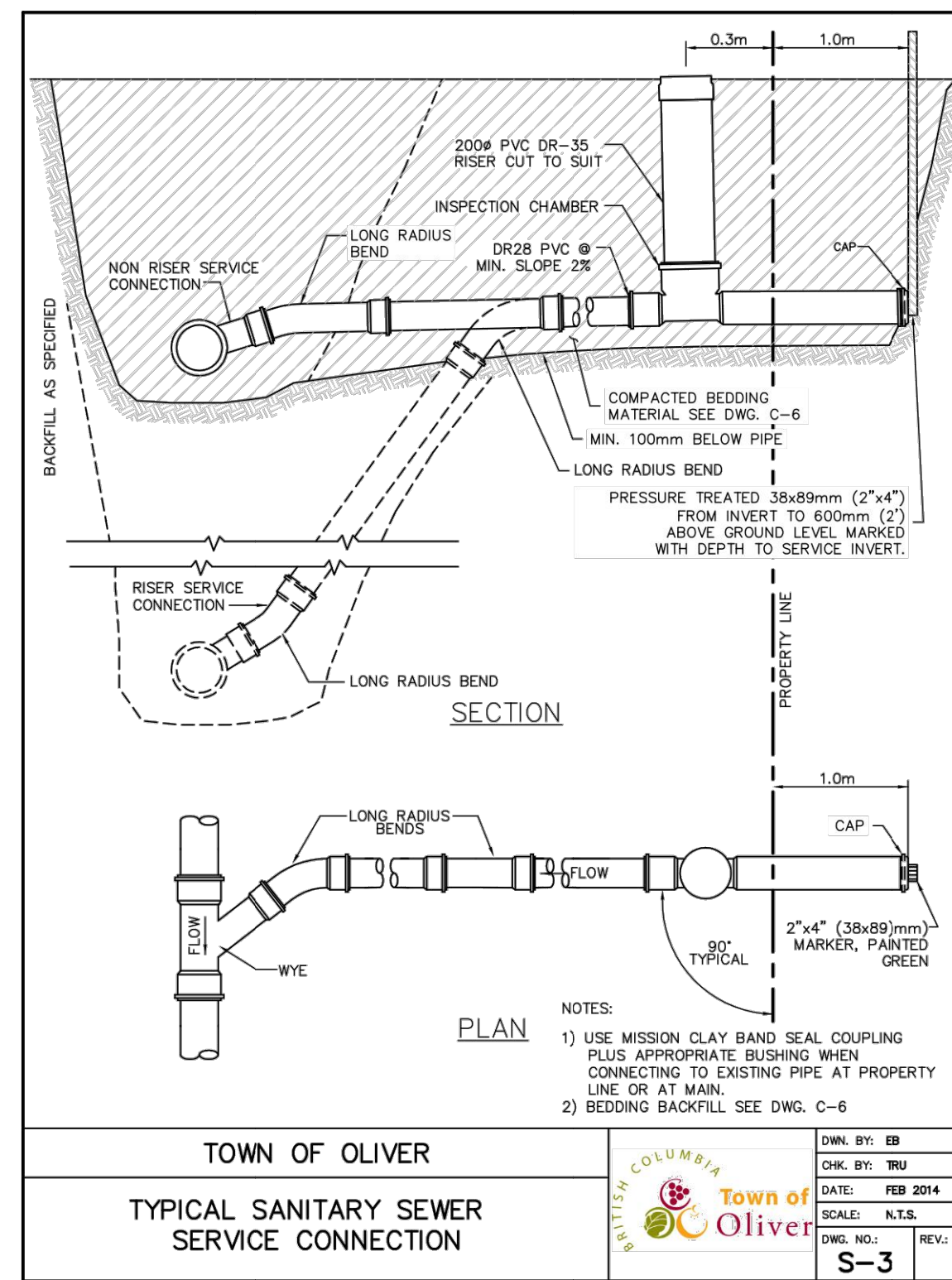
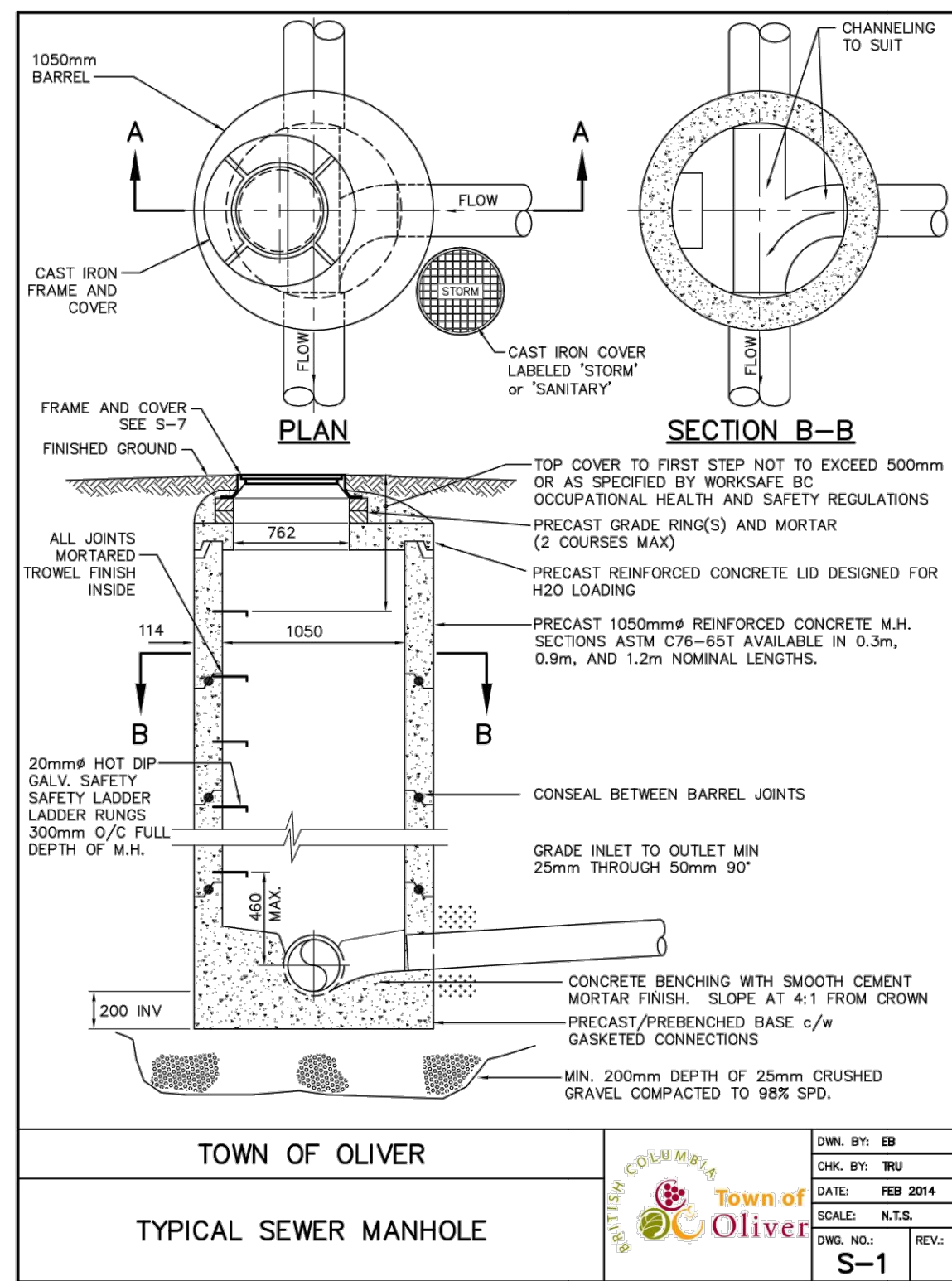
**STATION STREET RECONSTRUCTION**  
**BANK AVE to VETERANS AVE**

**TRUCK TURNING MOVEMENTS**

SCALE 0 1:250 10

DESIGN BY TT  
DRAWN BY DM  
DATE AUGUST 2021  
PROJECT REFERENCE No. 306-1674  
DRAWING No. SHEET  
**306-1674-09**  
REVISION **2**





No.	DATE	DESCRIPTION	BY	APP'D
2	AUG 31/21	ISSUED FOR CONSTRUCTION		
1	JULY 08/21	ISSUED FOR TENDER		

ISSUES / REVISIONS

CONSULTANT SEAL

201 - 2079 Falcon Road # Kamloops BC V2C 4J2  
 tel 250.828.0881 # fax 250.828.0717  
 info@TRUE.bc.ca

**STATION STREET RECONSTRUCTION**  
**BANK AVE to VETERANS AVE**

SCALE: N.T.S.

DESIGN BY: TT

DRAWN BY: DM

DATE: AUGUST 2021

PROJECT REFERENCE No.: 306-1674

DRAWING No.: 306-1674-11

SHEET: 2

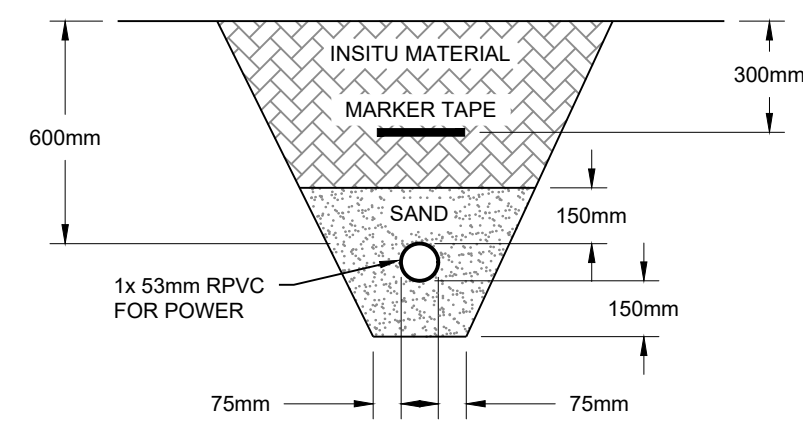
**GENERAL NOTES**

1. INSTALLATION MUST BE IN ACCORDANCE WITH THE TOWN OF OLIVER STANDARDS & FORTIS BC STANDARDS, CANADIAN ELECTRICAL CODE CSA 22.1-18 (BC AMENDMENTS), AND WITH THE SAFETY ENGINEERING SERVICES DIVISION.
2. LUMINAIRE LOCATIONS ARE TO BE SURVEYED BY THE CONTRACTOR AND CONFIRMED BY THE OWNERS REPRESENTATIVE PRIOR TO INSTALLATION OF BASES.
3. GROUNDING SHALL BE IN ACCORDANCE WITH THE CANADIAN ELECTRICAL CODE CSA 22.1-18.
4. SERVICE CONDUIT AND CONDUCTORS TO BE INSTALLED BY THE CONTRACTOR.
5. CONDUITS, BASES & JUNCTION BOXES SHALL BE INSTALLED BY A QUALIFIED ELECTRICAL CONTRACTOR WHO IS REQUIRED TO OBTAIN A PERMIT FROM TECHNICAL SAFETY B.C.
6. ALL CONDUITS UNDER ROADWAY SHALL BE BURIED MIN. 900mm DEEP. ALL OTHER CONDUITS SHALL BE BURIED MIN. 600mm DEEP & EMBEDDED IN SAND 150mm ABOVE & BELOW. A 'BURIED CABLE' MARKER SHALL BE INSTALLED IN ALL TRENCHED (300mm) ABOVE INSTALLED CONDUIT & MIN. 300mm BELOW GRADE).
7. ALL CONDUCTORS, NOT IN SIGNAL CABLE, SHALL BE STRANDED COPPER, TYPE RW90 AND TWH INSULATED, COLOUR CODED.
8. EMPTY CONDUITS SHALL HAVE A NYLON PULL STRING INSTALLED AND ENDS CAPPED.
9. COMMON CIRCUIT WIRING SHALL BE TY-WRAPPED TOGETHER & TAGGED IN JUNCTION BOXES AND ACCESS POINTS USING PANDUIT MP250-C I.D. TAGS AND INDELIBLE BLACK MARKER PEN.
10. 1.0m OF CABLE OR CONDUCTOR SLACK IS TO BE COILED IN EACH JUNCTION BOX.
11. ALL CONDUCTORS IN JUNCTION BOXES SHALL BE HUNG FROM RPVC CONDUIT SUPPORT BAR.
12. SLIPFITTER SHALL BE ADJUSTABLE AND PERMIT SECURE ATTACHMENT TO POLE TENON.
13. ALL POLES SHALL BE DESIGNED TO MEET 25 YEAR MEAN WIND LOADS FOR INSTALLATION LOCATION IN ACCORDANCE WITH CSA-S6-06.
14. POLES TO BE EQUIPPED WITH REINFORCED HAND HOLE MINIMUM 120mm X 120mm AND COVER ASSEMBLY GROUNDING STUD TO BE BOLTED INSIDE POLE WITHIN REACH OF HAND HOLE, COMPLETE WITH ONE NUT AND TWO WASHERS.
15. POLES SHALL BE FABRICATED WITH THE HAND HOLE ON THE NON-TRAFFIC SIDE.
16. LIGHT LOSS FACTOR (LLF) VALUES BASED ON 20 YEAR MAINTENANCE INTERVAL. LLF USED = 0.85.
17. CONDUCTOR LABEL EXAMPLE: 2C #8 LUM CCT  
2 = NUMBER OF CONDUCTORS  
#8 = CONDUCTOR SIZE @ AWG  
LUM CCT 1 = LUMINAIRE CIRCUIT '1'
18. THE CONTRACTOR SHALL REVIEW THE APPROVED SHOP DRAWINGS OF LAMP STANDARD BASES AND POLES TO ENSURE A PROPER MATCH OF BOTH. NO EXTRA COST SHALL BE INCURRED BY THE OWNER FOR POLES NOT ALIGNING WITH THE BASES.

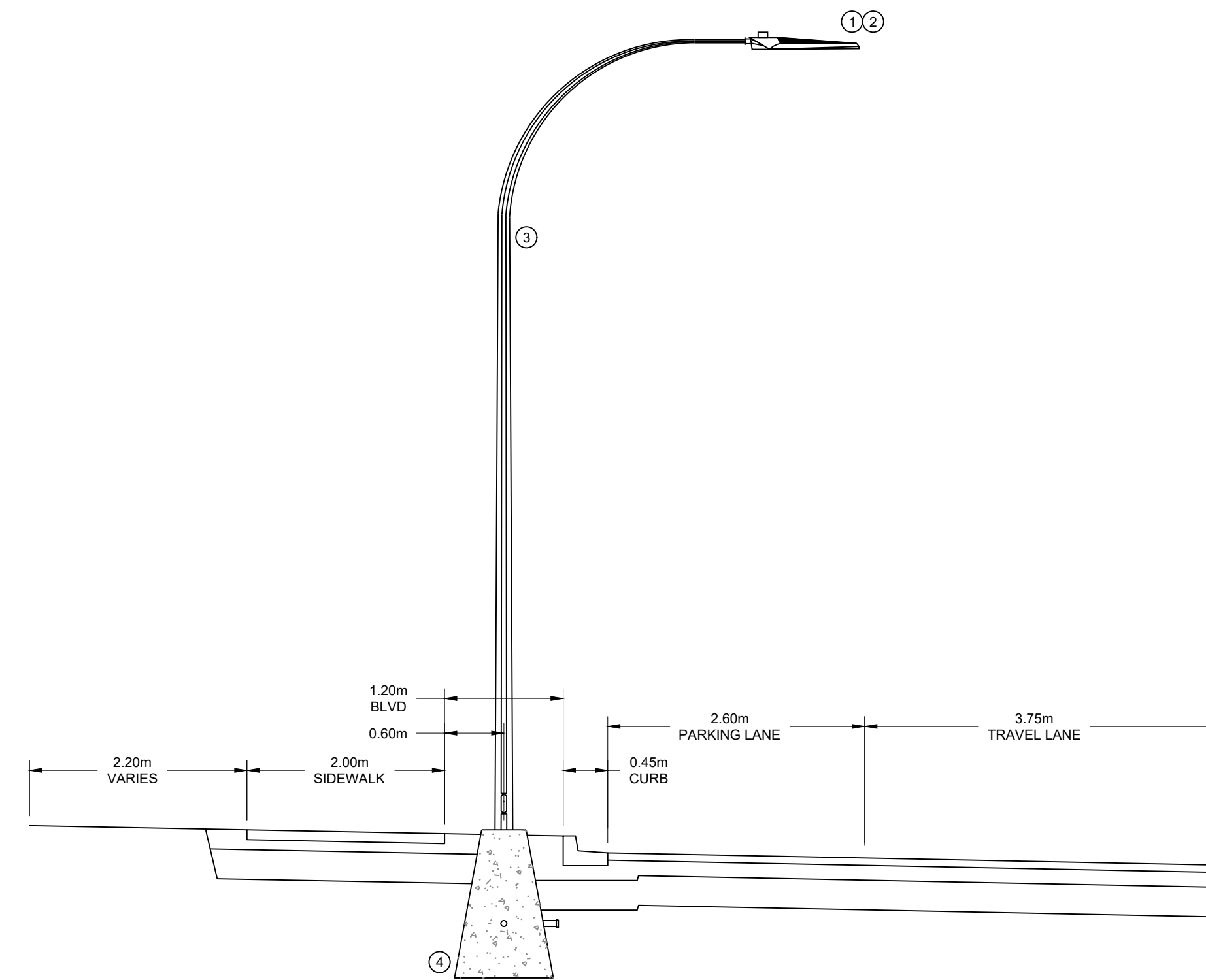
LUMINAIRE SCHEDULE							
POLE	LUMINAIRE DESCRIPTION	DISTRIBUTION TYPE	VOLTAGE	CCT (K)	WATTS	LUMENS	OPTIONS
	GE CURRENT EVOLVE CAT #. ERL1-0-06-B3-40-A-BLCK-R	TYPE II WIDE	120VAC	4000K	47W	6000	C/W 7-PIN RECEPTACLE, BLACK, SECONDARY 10kV/5KA SPD

STREETLIGHT BILL OF MATERIALS			
ITEM	DESCRIPTION	CATALOG NUMBER	QUANTITY
①	LED LUMINAIRES	REFER TO LUMINAIRE SCHEDULE	5
②	PHOTOCELL	INTERMATIC INC. LED4536SC	5
③	DAVIT POLE 9m COBRAHEAD POLE WITH 2.5m ARM. C/W HAND HOLE ON DOWNSTREAM TRAFFIC SIDE. HOT-DIP GALVANIZED & POWDER COATED BLACK	NOVA POLE	5
④	SERVICE POLE BASE, TYPE 'C1'; REFER TO MMCD CE1.3 & 1.4	CONTRACTOR PREFERRED SUPPLIER	5

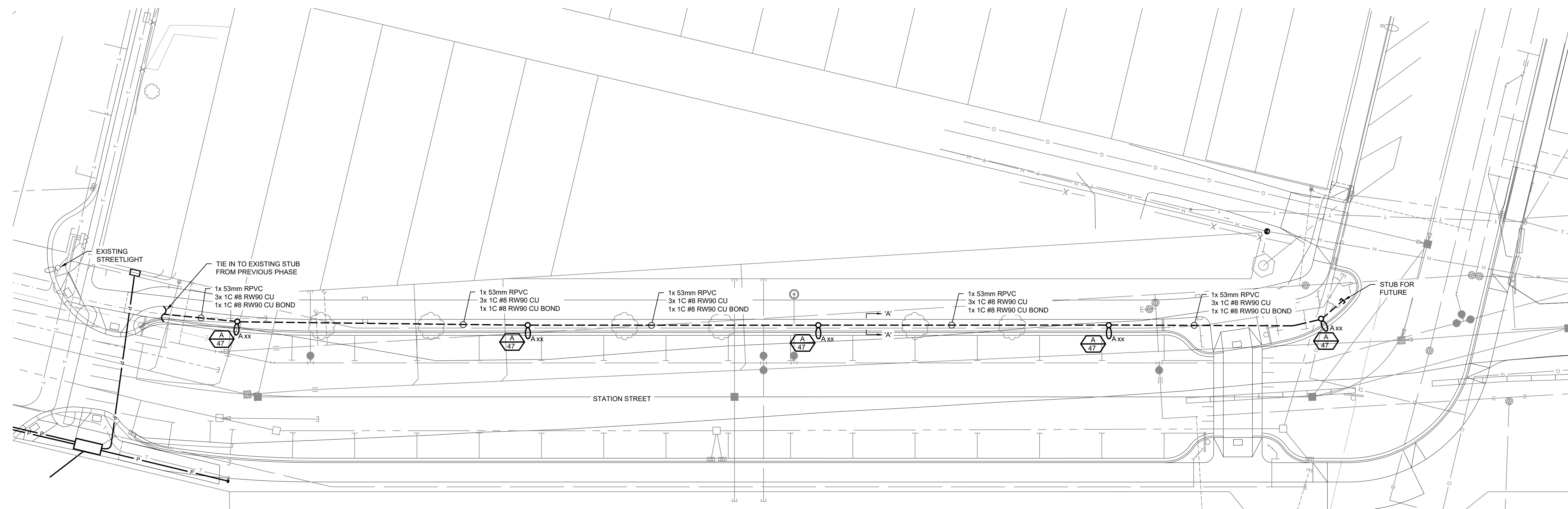
STREET LIGHTING DESIGN DATA							
STREET NAME	LAND USE	ROAD CLASSIFICATION TYPE	ILLUMINATION	DESIGN DATA		DESIGN CRITERIA	
				ILLUMINATION LEVEL (AVG. LUX)	UNIFORMITY RATIO	DESIGN AVG. (LUX)	UNIFORMITY RATIO
STATION STREET	COMMERCIAL	COLLECTOR, MEDIUM PEDESTRIAN ACTIVITY	47W LED	9.2	3.33	> 9.0	< 4.0



**TRENCH DETAIL 'A-A'**  
SCALE N.T.S.



**LUMINAIRE TYPE 'A'**  
SCALE N.T.S.



**STREETLIGHT SITE PLAN**  
SCALE: 1:250

CLIENT:

NO	DATE (YYMMDD)	DESCRIPTION	BY	APP'D
2	2021/08/31	ISSUED FOR CONSTRUCTION	EB	JCL
1	2021/08/09	ISSUED FOR CLIENT REVIEW	EB	JCL

REVISIONS	
SEAL:	DESIGNED BY: JCL
	DRAWN BY: EB
	CHECKED BY: JCL

SCALE: AS SHOWN

**EXCEED**  
ELECTRICAL ENGINEERING  
KAMLOOPS, BC • (250) 434-9489  
www.exceedeng.com

**TOWN OF OLIVER  
STATION STREET  
RECONSTRUCTION**

**STREET LIGHTING  
SITE PLAN**

PROJECT No.	16609		
SHEET	1	OF	2
DRAWING No.	E01		R 2

DESTROY ALL PRINTS PRIOR TO

R 2

**MMCD STANDARD DETAIL DRAWINGS**

BASE TYPE (I.E. C, C1, C2 & C3) SHALL BE IMPRINTED IN CONCRETE WITH A 25mm HIGH LETTER. LOCATE IMPRINT SO IT IS VISIBLE AFTER POLE INSTALLATION.

LOCATE CONDUITS IN THE CENTRE OF ANCHOR BOLT CIRCLE. LOCATE SERVICE CONDUITS FOR C1 & C3 CONCRETE BASES AS SHOWN ON DRAWING E8.3

Y-GROOVE DRAIN TO START AT ZERO DEPTH AND WIDTH IN THE CENTRE OF THE BASE AND EXTEND TO A 10mm DEPTH AND WIDTH AT THE OUTSIDE EDGE (ORIENT IN THE SAME DIRECTION AS CONDUIT)

NUTS AND WASHERS ARE SUPPLIED WITH POLE BOLT KITS. TOP OF BASE SHALL BE LEVEL. TROWEL FINISH TOP & CHAMFER EDGES.

FINISHED GRADE

R.PVC CONDUITS (NUMBER, LOCATION AND SIZE VARIES)

4-25mm# x 920mm LONG GALVANIZED ANCHOR BOLTS (SEE DRAWING CE1.15 FOR DETAILS)

GROUND ROD(S) OR PLATE FOR SERVICE BASE (SEE DRAWING E8.10 FOR DETAILS)

ANCHOR BOLT NUT (SUPPLIED WITH ANCHOR BOLT)

NUTS SHALL BE SUPPLIED TACK WELDED TO ANCHOR BOLTS.

STEEL PLATE (SUPPLIED WITH ANCHOR BOLT)

CONCRETE SHALL HAVE ATTAINED A COMPRESSIVE STRENGTH OF 30MPa PRIOR TO POLE INSTALLATION

4-25mm# x 920mm LONG GALVANIZED ANCHOR BOLTS (SEE DRAWING CE1.15 FOR DETAILS)

PRECAST CONCRETE BASES

BASE TYPE	POLE TYPE	APPROXIMATE MASS	VOLUME OF CONCRETE	A	B	C	D	E
C	9.0m & 11.0m DAVIT LUMINAIRE POLES	2000 kg	0.83m <sup>3</sup>	197	280	450	1500	1000
C1	8.1m & 10.1m DAVIT LUMINAIRE POLES ON 0.9m HIGH SERVICE BASE	2000 kg	0.83m <sup>3</sup>	269	380	450	1500	1000
C2	4.0m, 6.0m & 7.5m POST TOP LUMINAIRE POLES & 7.5m DAVIT LUMINAIRE POLE	706 kg	0.28m <sup>3</sup>	197	280	360	1200	600
C3	6.6m DAVIT LUMINAIRE & 3.1m, 5.1m & 6.6m POST TOP LUMINAIRE POLES ON 0.9m HIGH SERVICE BASE	833 kg	0.33m <sup>3</sup>	269	380	450	1200	600

**NOTES**

- REFER TO CONTRACT DRAWINGS, SECTION 03 40 01 AND SECTION 34 41 13 FOR DETAILED SPECIFICATIONS.
- ALL DIMENSIONS ARE IN MILLIMETRES UNLESS OTHERWISE NOTED.
- SEE DRAWING CE1.4 FOR ADDITIONAL DETAILS.
- SEE DRAWING CE1.19 & CE1.20 FOR BACKFILL REQUIREMENTS.

NOT TO SCALE

TYPE C, C1, C2 & C3 TRAPEZOIDAL SHAPE CONCRETE BASES

DRAWING NUMBER: **CE1.3**

**MMCD STANDARD DETAIL DRAWINGS**

LOCATE CONDUITS IN THE CENTRE OF ANCHOR BOLT CIRCLE. LOCATE SERVICE CONDUITS FOR C1 & C3 CONCRETE BASES AS SHOWN ON DRAWING E8.3

Y-GROOVE DRAIN TO START AT ZERO DEPTH AND WIDTH IN THE CENTRE OF THE BASE AND EXTEND TO A 10mm DEPTH AND WIDTH AT THE OUTSIDE EDGE (ORIENT IN THE SAME DIRECTION AS CONDUIT)

NUTS AND WASHERS ARE SUPPLIED WITH POLE BOLT KITS. TOP OF BASE SHALL BE LEVEL. TROWEL FINISH TOP & CHAMFER EDGES.

FINISHED GRADE

R.PVC CONDUITS (NUMBER, LOCATION AND SIZE VARIES)

4-25mm# x 920mm LONG GALVANIZED ANCHOR BOLTS (SEE DRAWING CE1.15 FOR DETAILS)

GROUND ROD(S) OR PLATE FOR SERVICE BASE (SEE DRAWING E8.10 FOR DETAILS)

ANCHOR BOLT NUT (SUPPLIED WITH ANCHOR BOLT)

NUTS SHALL BE SUPPLIED TACK WELDED TO ANCHOR BOLTS.

STEEL PLATE (SUPPLIED WITH ANCHOR BOLT)

CONCRETE SHALL HAVE ATTAINED A COMPRESSIVE STRENGTH OF 30MPa PRIOR TO POLE INSTALLATION

4-25mm# x 920mm LONG GALVANIZED ANCHOR BOLTS (SEE DRAWING CE1.15 FOR DETAILS)

PRECAST CONCRETE BASES

TOP VIEW

ELEVATION

POLE ASSEMBLY DETAIL

POLE BASE PLATE

280 B.C.D.

19 THICK PLATE

SMALL HANDHOLE

POLE BASE PLATE

200 A/F EXCEPT FOR TYPE 2 - 4.1m & 5.6m SHAFTS WHICH SHALL BE 180 A/F

2500

2500

120 A/F

120 A/F

67 A/F

60# x 180 TENON

LUMINAIRE (TYPICAL)

TYPE 2A LUMINAIRE ARM

TYPE 1 FLANGE

TYPE 1 FLANGE

TYPE 2 SHAFT

TYPE 2C LUMINAIRE ARM

TYPE 1 FLANGE

TYPE 2A OR 2C LUMINAIRE ARMS

FLANGE (TYPICAL)

TYPE 2 SHAFT

INSTALL ANTI-SEIZE LUBRICANT ON BOLT THREADS

25mm# ANCHOR BOLTS

CONCRETE BASE

MAXIMUM 4 SHIMS PER BOLT

NOTES

- REFER TO CONTRACT DRAWINGS, SECTION 25 56 01 FOR DETAILED SPECIFICATIONS.
- SEE DRAWING E4.2 FOR TYPE 2 SHAFT, BOLT KITS AND POLE ASSEMBLY DETAILS.
- ALL DIMENSIONS IN MILLIMETRES UNLESS OTHERWISE NOTED.
- POLE SHAFTS TO BE SUPPLIED 0.9m SHORTER WHERE BEING INSTALLED ON SERVICE BASE.

NOT TO SCALE

TYPE C, C1, C2 & C3 TRAPEZOIDAL SHAPE CONCRETE BASES

DRAWING NUMBER: **CE1.4**

**MMCD STANDARD DETAIL DRAWINGS**

60# x 180 TENON

LUMINAIRE (TYPICAL)

LEVEL

2500

67 A/F

TYPE 2A LUMINAIRE ARM

TYPE 1 FLANGE

120 A/F

2500 (TYPICAL)

TYPE 1 FLANGE

120 A/F

TYPE 2C LUMINAIRE ARM

2500

TYPE 1 FLANGE

TYPE 2 SHAFT

200 A/F EXCEPT FOR TYPE 2 - 4.1m & 5.6m SHAFTS WHICH SHALL BE 180 A/F

POLE BASE PLATE

SMALL HANDHOLE

ELEVATION

19 THICK PLATE

280 B.C.D.

POLE BASE PLATE

NOTES

- REFER TO CONTRACT DRAWINGS, SECTION 25 56 01 FOR DETAILED SPECIFICATIONS.
- SEE DRAWING E4.2 FOR TYPE 2 SHAFT, BOLT KITS AND POLE ASSEMBLY DETAILS.
- ALL DIMENSIONS IN MILLIMETRES UNLESS OTHERWISE NOTED.
- POLE SHAFTS TO BE SUPPLIED 0.9m SHORTER WHERE BEING INSTALLED ON SERVICE BASE.

NOT TO SCALE

LUMINAIRE POLE (TYPE 2 SHAFT)

DRAWING NUMBER: **E4.1**

PART	MASS (kg)
TYPE 2(5) SHAFT - 5.0m	83
TYPE 2(1) SHAFT - 4.1m FOR SERVICE BASE	71
TYPE 2(4.5) SHAFT - 6.5m	102
TYPE 2(1) SHAFT - 5.6m FOR SERVICE BASE	90
TYPE 2(8.5) SHAFT - 8.5m	128
TYPE 2(4) LUMINAIRE ARM	35
TYPE 2(2) LUMINAIRE ARM	65
TYPE 1 FLANGE COVER PLATE (1FCP)	1.5

\* [ ] I.D. LABEL ON POLE

**MMCD STANDARD DETAIL DRAWINGS**

TYPE 1 FLANGE COVER PLATE

TYPE 2A OR 2C LUMINAIRE ARMS

FLANGE (TYPICAL)

TYPE 2 SHAFT

INSTALL ANTI-SEIZE LUBRICANT ON BOLT THREADS

25mm# ANCHOR BOLTS

CONCRETE BASE

MAXIMUM 4 SHIMS PER BOLT

NOTES

- REFER TO CONTRACT DRAWINGS, SECTION 25 56 01 FOR DETAILED SPECIFICATIONS.
- SHAFTS TO BE INSTALLED PLUMB.
- ALL SHAFTS, ARMS AND EXTENSIONS TO BE SUPPLIED WITH A GALVANIZED FINISH, UNLESS OTHERWISE NOTED.
- APPLY GREASE TO ANCHOR BOLT THREADS.
- TOUCH UP ANY SCRATCHES IN GALVANIZED SURFACES WITH COLD GALVANIZING COMPOUND.

NOT TO SCALE

LUMINAIRE POLE (TYPE 2 SHAFT)

DRAWING NUMBER: **E4.2**

ITEM	QUANTITY	DESCRIPTION
A	4	16mm# x 75mm LONG BOLT, 2 NUTS AND 2 WASHERS.
B	1	SMALL HANDHOLE COVER WITH 10mm# x 65mm LONG BOLT, WASHER & BACKER BAR.
C	1	10mm# x 30mm LONG BONDING BOLT WITH 1 NUT AND 2 WASHERS.
D	4	PLASTIC NUT COVERS FOR 25mm# NUTS.
E	4	LEVELLING SHIMS.
F	4	25mm# NUTS AND WASHERS.

NO	DATE (YYMMDD)	DESCRIPTION	BY	APD
10				
9				
8				
7				
6				
5				
4				
3				
2	2021/08/31	ISSUED FOR CONSTRUCTION	EB	JCL
1	2021/08/09	ISSUED FOR CLIENT REVIEW	EB	JCL

SEAL:

DESIGNED BY: JCL

DRAWN BY: EB

CHECKED BY: JCL

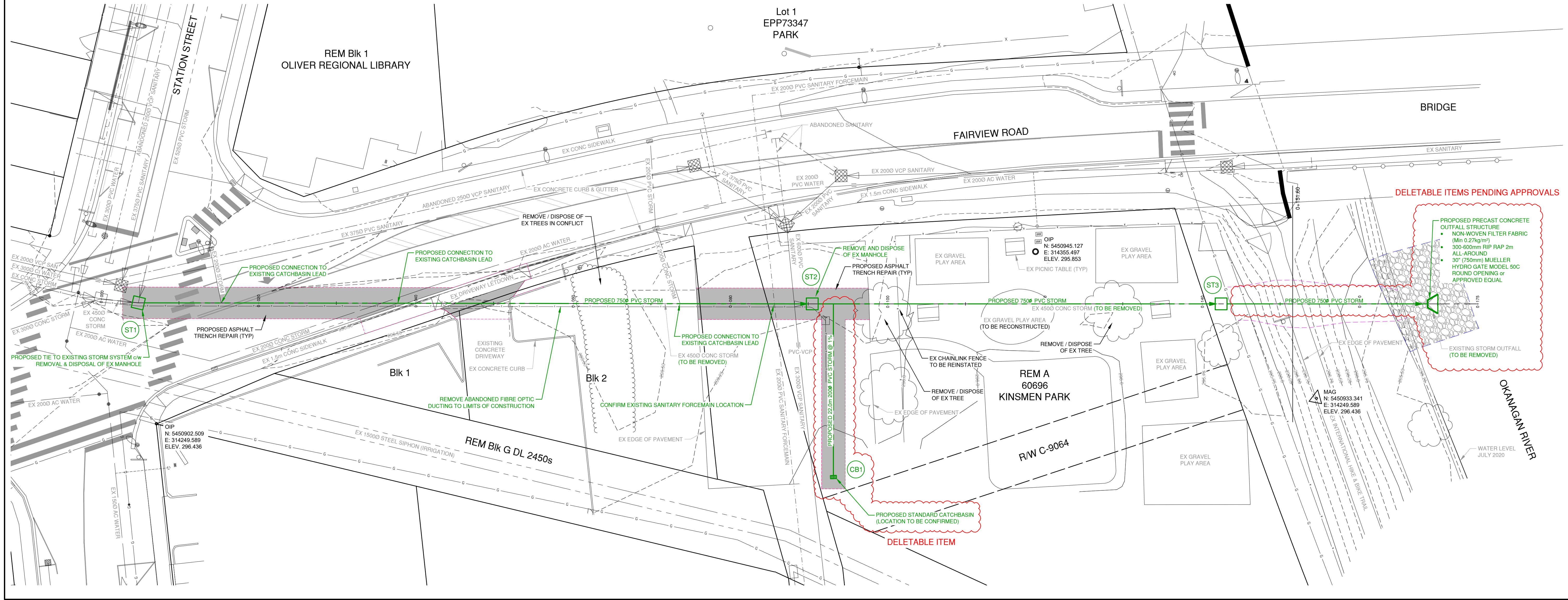
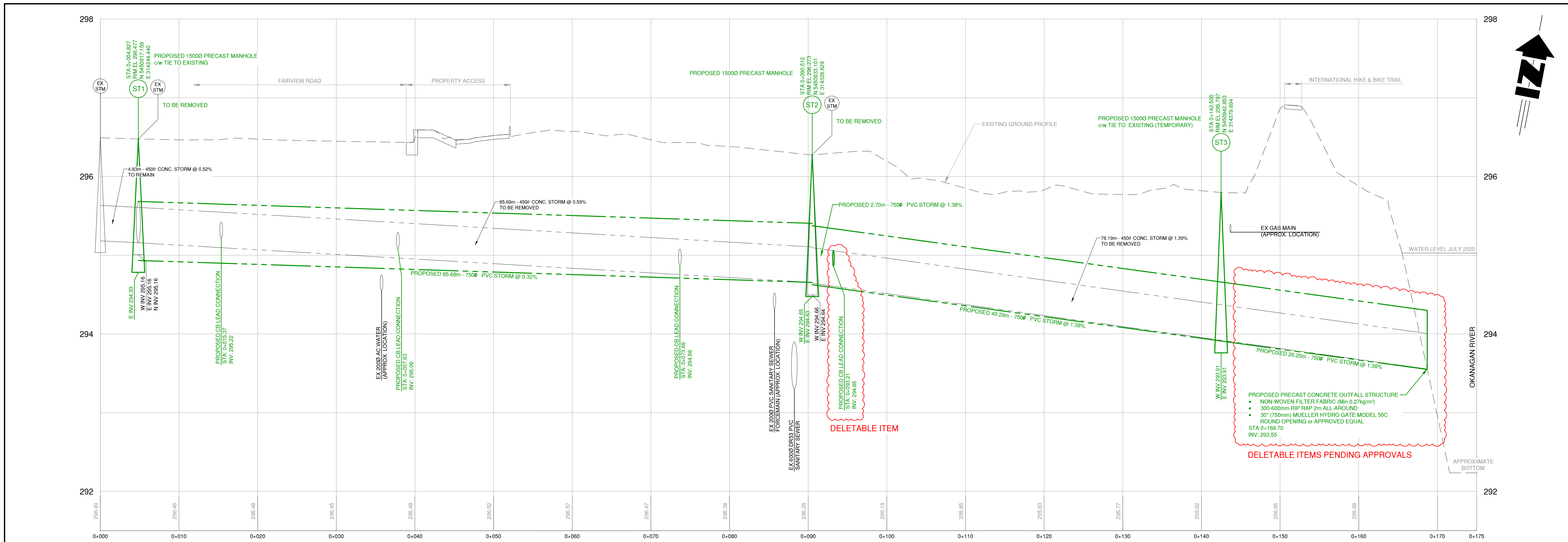
SCALE: AS SHOWN

**EXCEED**  
ELECTRICAL ENGINEERING  
KAMLOOPS, BC • (250) 434-9489  
www.exceedeng.com

**TOWN OF OLIVER  
STATION STREET  
RECONSTRUCTION**

STREET LIGHTING  
DETAILS

PROJECT No.	16609
SHEET	2 OF 2
DRAWING No.	E02
DESTROY ALL PRINTS PRIOR TO	R 2



LEGEND		
EXISTING	PROPOSED	DESCRIPTION
		SANITARY MAIN
		SANITARY FORCEMAIN
		CLEANOUT
		LIFT STATION
		SEPTIC TANK
		STORM MAIN
		STORM DITCH
		CULVERT
		STORM MANHOLE
		CATCHBASIN
		STORM DRYWELL
		WATER MAIN
		CURB STOP
		VALVE
		STANDPIPE HYDRANT
		AIR RELEASE VALVE
		REDUCER
		SPRINKLER
		IRRIGATION BOX
		END CAP
		POWER
		TEL CABLE
		STREET LIGHT
		GAS
		POWER POLE
		LAMP STANDARD
		LIGHT POST
		POLE ANCHOR
		JUNCTION BOX
		TEST PIT
		IRON PIN
		SURVEY CONTROL

No.	DATE	DESCRIPTION	BY	APP
3	AUG 31/21	ISSUED FOR CONSTRUCTION	TT	SU
2	JULY 09/21	ISSUED FOR TENDER	TT	SU
1	JULY 27/20	ISSUED FOR BUDGETING	TT	SU

ISSUES / REVISIONS		

CONSULTANT SEAL

201 - 2079 Falcon Road = Kamloops BC = V2C 4J2  
tel 250.828.0881 = fax 250.828.0717  
info@TRUE.bc.ca

Town of Oliver  
CANADA'S WINE CAPITAL

## FAIRVIEW ROAD STORM OUTFALL REPLACEMENT

### PLAN and PROFILE

SCALE: H - 1:250, V - 1:25

DESIGN BY: SU/TT  
DRAWN BY: TT  
DATE: JULY 2020

PROJECT REFERENCE No.: 306-1921

DRAWING No. **306-1921 01**

SHEET **3**